



# POUTAMA REO

A MĀORI LANGUAGE MOVEMENT



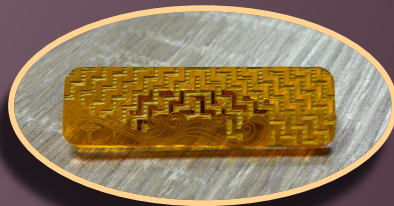


# What is Poutama Reo?

Poutama Reo is a Māori language movement led by Tū Rangatira - a group from Kaipara College.

It's a badge system - each badge shows the proficiency of the wearer. To gain each badge you do an assessment.

The idea of the badges is to promote the use of te reo Māori and create an environment where people feel safe to speak Māori at the level they feel comfortable.





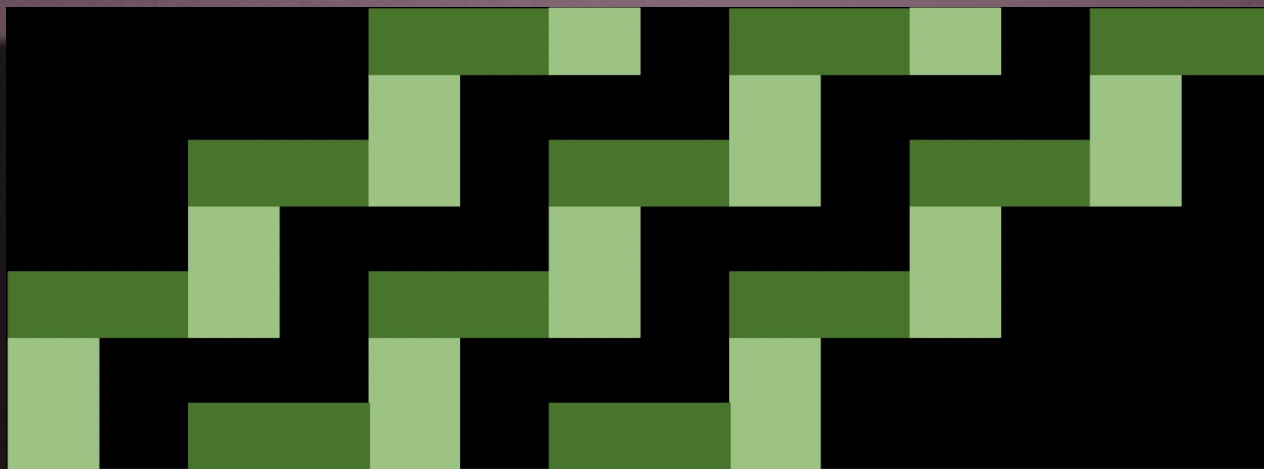
# How and why was Poutama Reo created?

Poutama Reo was inspired by the Reo Māori proficiency rubber wristbands our students received at the Raranga Tahi Summit in 2019, and the SVA badge system. We developed this kaupapa during a wānanga in Rotorua in 2022.





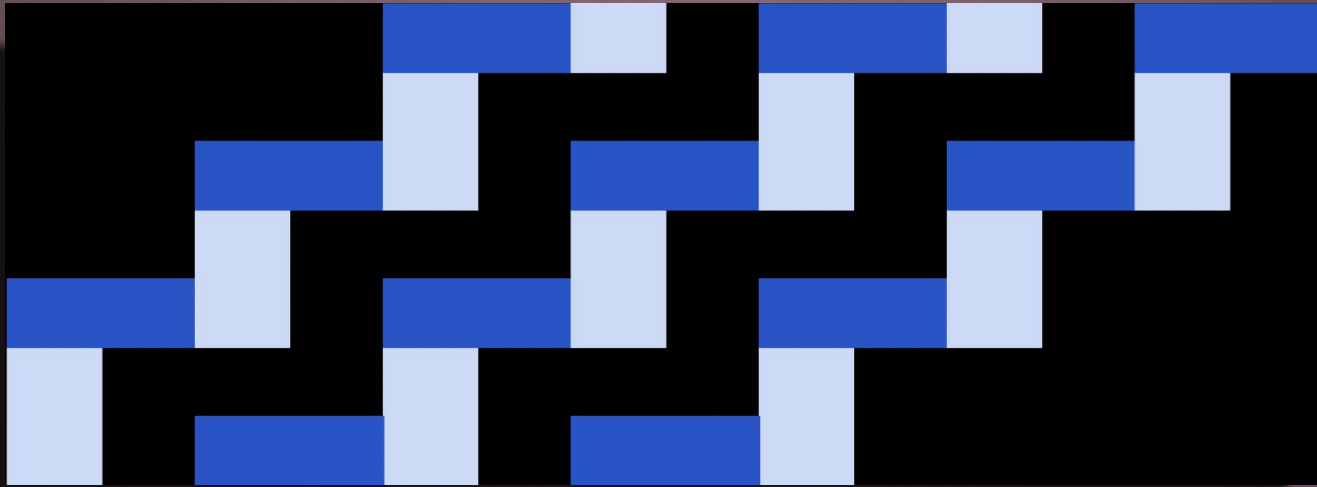
# Ngā Uri a Tāne



The initial stage of the badges, titled Ngā Uri a Tāne, features the colour green. In Māori lore, Tāne fathered many beings within this world. Consequently, as all creations spring from Tāne, our journey commences here.

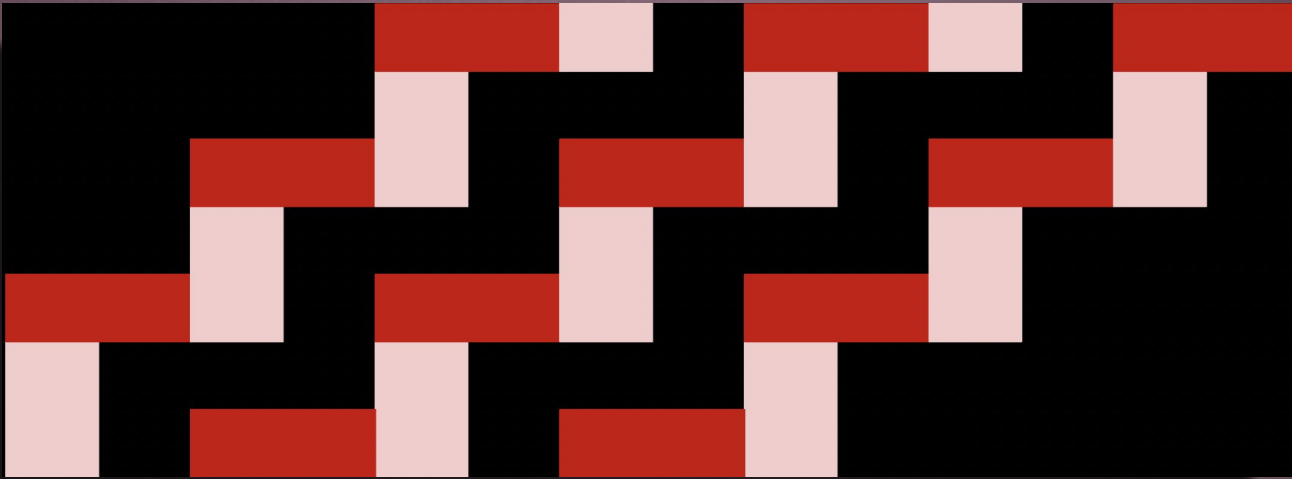


# Te Waiora



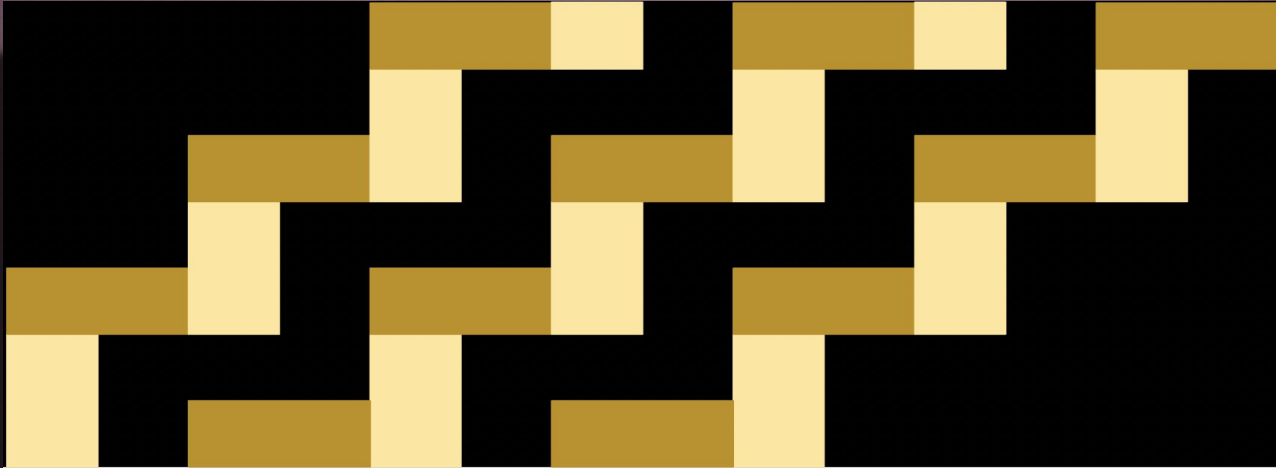
The second stage, known as Te Waiora, is represented by the colour blue, symbolizing all water bodies. This Poutama reflects water's nature to flow and connect, suggesting that at this point, our language too will begin to flow seamlessly.

# Te Ahi Kōmau



The third stage, Te Ahi Kōmau, is marked by the colour red, associated with both the peril and vitality of fire. This stage serves as a reminder of the ongoing need for vigilance and perseverance in our endeavours, cautioning against complacency.

# Te Toi Huarewa



The fourth and concluding stage, Te Toi Huarewa, bears the colour gold. This stage alludes to the whirlwind path to the highest heavens, home to the baskets of knowledge. Completing our elemental theme, the wind, symbolized by Tāne (forest) and Tāwhirimātea (wind/thunder), underscores the necessity of support in mastering Te Reo Māori, reinforcing that the journey requires collaborative effort.





# Our Journey

Currently, our initiative lives within our local primary schools and pre-schools and Carmel College.

Within our school around 80% of our staff have their first badge. We have just started up workshops to help assist our staff on achieving their next level badges.

We introduce the first badge assessment to our year 9 te reo Māori class as an assessment for them to complete.





# Future

We have put forth a workshop proposal and hope to present at the 2025 NASDAP conference back here in Wellington next year. Our vision is to reach more secondary schools.



 **NASDAP 2025**

Te rangapū ā motu mō ngā Tumuaki tuarua

National Association of Secondary Deputy  
& Assistant Principals Conference

Tākina, Wellington | 30 July - 1 August 2025

Leadership resilience in times of complexity & change



# EXAMPLE ASSESSMENT

NGĀ URI A TĀNE - LEVEL ONE





Name: \_\_\_\_\_ Assessor name: \_\_\_\_\_ Date: \_\_\_\_\_

Ngā Uri a Tāne		Examples	Record responses here:	Checklist
Language structures	1. What is a formal greeting in Te Reo Māori?	- Formal i.e. Tēnā koe		<input type="checkbox"/>
	2. What is an informal greeting in Te Reo Māori?	- Informal i.e. Kia ora		
	3. List 10 basic words in Māori and give their English equivalents. a. No numbers b. No colours	- Maunga - Mountain - Awa - River - Waka - Canoe - Kura - School - Kaiako - Teacher - Pene rākau - Pencil - Moana - Sea - Iwi - People, tribe - Kaipara - The name of our moana, area. - Aotearoa - New Zealand		<input type="checkbox"/>
	4. How do you say, "My name is..." in Te Reo Māori.	Ko Bob tōku ingoa		<input type="checkbox"/>
	5. Name 5 Colours in te reo Māori and give their English equivalents.	- Mā, whero, Kākāriki, pango, kōwhai, parauri, kikorangi, karakaraka		<input type="checkbox"/>
	6. Count to 10 in Māori	- 1-10		<input type="checkbox"/>
Waiata/Haka	7. Sing a basic waiata	- Te Aroha - Tutira mai ngā iwi - He honore		<input type="checkbox"/>
Karakia/Huahuatau	8. Recite our school karakia or another basic karakia.	- School karakia		<input type="checkbox"/>
Whakataukī / Kīwaha	9. What is our school whakataukī and what does it mean?	- Eke panuku, eke Tangaroa. Navigate to Success		<input type="checkbox"/>

Has the individual completed the tasks to receive their 'Ngā Uri a Tāne' badge?

☐

Signed by assessor:

Date:



# Student Experience

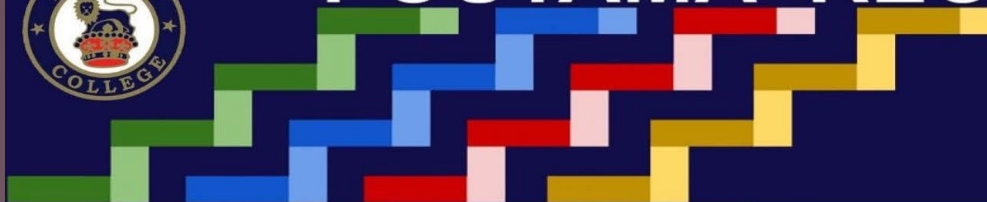




# Movement Milestones



## POUTAMA REO



### Taumata 1

Tū Rangatira... ✓

- Develop kaupapa
- Get assessed for their 'Ngā Uri a Tāne' badges.

### Taumata 2

Tū Rangatira... ✓

- Launch 'Poutama Reo' with staff on Māori Language Week.
- Assess staff for their 'Ngā Uri a Tāne' badges.
- Develop assessments for other levels

### Taumata 3

Tū Rangatira... ✓

- Launch 'Poutama Reo' with students and whānau in 2024.
- Assess students for 'Ngā Uri a Tāne'.
- Assess staff and students for other levels.

### Taumata 4

Tū Rangatira... ✓

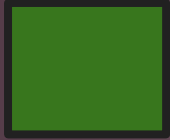
- Look at spreading our movement to other kura by Māori Language Week 2024.



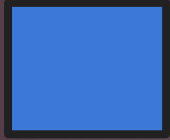




# The next milestones of our movement



To spread our movement beyond the schools in our Kahui Ako - At least two more secondary schools adopting the kaupapa by the end of 2025.



To approach businesses about incorporating Poutama Reo into their organisations - at least one business on board by the end of 2025.



To present to the Ministry of Education by Māori Language Week 2025.



To have 90% of our staff and 250 of our students or more on the kaupapa by Māori Language Week 2025.



Help us to keep the  
kaupapa moving!

