

# Pānui 2026




Pānui = An Informational sharing of key topics and overviews



Navigate To Success.  
Eke Panuku, Eke Tangaroa.



# Pānui Contents

- 1 • Acting Principal's Message
- 2 • New Principal Announcement - School Board
- 3 • Our Mission, Vision & Values
- 4 • Our Vision: Navigate to Success - Eke Panuku, Eke Tangaroa
- 5 • Te Waka o Kaipara - WAKA Values
- 6 • Nga Tira o te WAKA o Kaipara (Our House System) - page 1
- 7 • Nga Tira o te WAKA o Kaipara - page 2
- 8 • Nga Tira o te WAKA o Kaipara - page 3
- 9 • Nga Tira o te WAKA o Kaipara - page 4
- 10 • Our Curriculum
- 11 • Te Waka Eke Panuku (Our Pastoral Curriculum)
- 12 • Rugby Academy 
- 13 • Key Start Dates 2026
- 14 • Year 9 Pōwhiri
- 15 • New Student - Meet & Greet Evening
- 16 • Administration Matters
- 17 • Key Term Dates - an Overview
- 18 • Our Team Supporting Your Student
- 19 • Whānau/Visitors to the Student Centre
- 20 • The School Day
- 21 • Attendance
- 22 • Reporting at Kaipara College
- 23 • Interviews & Meetings
- 24 • Fortnightly Reports
- 25 • Travelling to School
- 26 • School Bus Information
- 27 • Additional School Bus Information
- 28 • Additional Transport Information
- 29 • Student Stationery Requirements
- 30 • Uniform - page 1
- 31 • Uniform - page 2
- 32 • Uniform - page 3
- 33 • Mobile Learning Devices - page 1
- 34 • Mobile Learning Devices - page 2
- 35 • Device Requirements for Juniors
- 36 • Device Requirements for Seniors
- 37 • Student Mobile Phones - Away for the Day
- 38 • Extra-curricular Activities
- 39 • Our Tuck Shop
- 40 • Staying in Touch
- 41 • Staying in Touch Continued
- 42 • Using the SchoolBridge App
- 43 • Year 9 Camp November 2026
- 44 • Frequently Asked Questions
- 45 • Support for Families Over the Break





# Acting Principal's Message



E te whānau o Kaipara, tēnā koutou katoa

As we look ahead to 2026, I want to begin with a simple truth about our kura. Kaipara College is a place where young people are known, cared for, and guided with purpose. We are a community shaped by our people, our place, and a shared belief that every student can grow into their strengths when they are supported by clear systems, strong relationships, and a culture that holds them. In 2026, we build on this momentum with focus and clarity.

## Our WAKA Values at the Centre

Everything we do at Kaipara revolves around our WAKA values

- Whanaungatanga (our people),
- Aroha (our way),
- Kaitiakitanga (our place),
- Angitūtanga (our success).

These values are not slogans on a wall. They are the heartbeat of our school. They shape how we relate, how we teach, how we learn, and how we move forward together. In 2026, our WAKA values will be woven even more deeply into classrooms, pastoral care, curriculum design, and community events. They are the compass that keeps our waka steady.

## A School Where Belonging Comes First

One of Kaipara College's greatest strengths is its sense of connection. We serve families from across the South Kaipara region. Our students bring diverse stories, talents, and aspirations, and when they arrive here, they join a kura that knows them and wants the very best for them.

This is why our shift to Vertical Whānau Classes has been such a powerful step forward. These groups blend Years 9 to 13 to create natural mentoring, leadership, and support. Younger students feel welcomed from their first day. Older students grow as guides and role models. Teachers can build deep, sustained relationships with their whānau class. In 2026, this structure will continue to strengthen the belonging and stability our students deserve.

## Tira: Strengthening Identity and Community Spirit

Our Tira system has quickly become the backbone of student connection and culture at Kaipara. Each student belongs to one of four Tira, giving them a sense of identity, pride, and whānau within the wider school. Tira events, challenges, and celebrations encourage teamwork, resilience, creativity, and leadership. In 2026, the Tira system will continue to grow as a place where students can shine, collaborate, and feel part of something bigger than themselves. Whether your child is new to Kaipara or returning, they will join a travelling party of peers and teachers who move alongside them.

## High Expectations, High Support

Kaipara College is committed to excellent and equitable learning. We want every student to flourish. In 2026, we are strengthening key systems to lift learning and wellbeing for all students. This includes:

- clearer routines that help classrooms stay calm and focused
- stronger pastoral care through enhanced pastoral care systems
- improvements to assessment and reporting processes
- expanded course pathways that reflect student interests and local opportunities
- sustained partnerships with iwi, community groups, and local industries
- a curriculum connected to place, creativity, and future possibilities

Students thrive when expectations are clear and support is strong. This is what we will continue to build.

## A School Growing With Purpose

Kaipara College is entering a period of strength. Families want to be here because they see a school that knows who it is and where it is going. This growth is not just about numbers. It is about quality. It is about creating a school culture where calm, connection, and high expectations sit side by side.

## Looking Ahead to 2026 with a new Principal

We are thrilled to announce that we will be welcoming **new principal Jane Coup** to our kura in January 2026. See over the page for the School Board letter announcing Jane's appointment.

To our new students and whānau, haere mai. We look forward to welcoming you into our community. You are joining a kura that will back you, guide you, and challenge you to grow. To our returning students and families, thank you for your trust and partnership. Your belief in our direction strengthens everything we do.

2026 will be a year shaped by connection, clarity, and opportunity. A year where our WAKA values guide us forward. A year where every student can step into their potential. A year where we welcome a new Principal to lead our kura into its next chapter.

Our waka is moving with purpose. We invite you to climb aboard.

Haere mai ki te Kāreti o Kaipara. Nō tātou te waka, nō tātou te pae tawhiti.

Ngā manaakitanga,

Acting Principal, Bernard Coleman



# New Principal Announcement School Board

Kia ora,

The Kaipara College School Board are delighted to be able to announce the appointment of the new Principal of Kaipara College.

Despite the challenge of running a recruitment process very late in the academic year it was pleasing that we received a significant number of high-quality applications, reflecting the attractiveness of a role at Kaipara College and the opportunity to live and work in our rohe (district), and to guide our ākonga (students).

We were looking for a committed, courageous and resilient leader who showed a deep understanding of Te Waka o Kaipara (our WAKA values), and who had a clear plan to bring them to life.

Also central to our search was the desire to identify a leader who was committed to an 'everything matters' approach to student standards and behaviors, to maintaining high academic expectations, and who cares deeply and believes strongly in the capability of our students to excel and live up to our motto - Eke Panuku, Eke Tangaroa (navigate to success).

We believe that in Jane Coup we have found that leader.

During her 13 years at Waitakere College, she has consistently initiated and led groundbreaking initiatives that have raised equity and significantly improved academic performance, including driving forward the biology scholarship programme and founding the Maori and Pasifika Medical Science Academy.

She has a Masters of Secondary School Leadership from Victoria University, and over 20 years education experience across roles as head of biology, head of science, Y11-13 dean, as deputy principal, and also sat on the school board as teacher representative for 5 years.

She was recognised in 2023 as an emerging leader and in 2025 was invited to the New Zealand Education Scholarship Trust leadership forum, a highly prestigious accolade designed to prepare Deputy Principals for Principalship.

Our new Principal will take up their post for the start of the 2026 year, and will be welcomed into the role and our community with a pōwhiri early in the school year. More details of these events and other opportunities to get to know Jane will be shared closer to the time.

The School Board would like to recognise the strong and positive leadership of Bernard Coleman as Acting Principal over the past 3 months, and thank him for his service. Bernard's calm, consistent and determined leadership has had an immediate impact on our Kura, recognised by students, staff and whānau alike.

We are committed to supporting Bernard's ongoing professional development journey and believe the combination of Jane and the existing Senior Leadership Group, including Bernard and his fellow Deputy Principals Brianne Te Paa and Brigitta Bravery, means we have all the ingredients needed to deliver real change and become the school of choice in our community again.

On behalf of the staff and school board of Kaipara College I wish you a Merry Kirihimete (Christmas), and look forward to seeing you all at the College in 2026.

Ngā mihi o te wā,



Colin May  
Presiding Member, Kaipara College School Board





# Our Mission, Vision & Values

**Our core purpose is to teach our rangatahi so they all reach their potential and are able to take their place as curious, connected, confident and contributing citizens in their community, Aotearoa New Zealand, and the world.**



**Navigate to success.  
Eke panuku, eke Tangaroa.**



# Our Vision: Navigate to Success Eke Panuku, Eke Tangaroa

At Kaipara College our mission is to equip every student with the skills and values needed to thrive academically, culturally, socially, and emotionally. Guided by Te WAKA o Kaipara, our school values of:

**Whanaungatanga** (Our People)

**Aroha** (Our Way)

**Kaitiakitanga** (Our Place)

**Angitūtanga** (Our Success)

we are committed to growing young people who feel known,  
connected, and confident in their futures.

Our goal is for each learner to experience a strong sense of belonging, achieve success in ways that reflect their strengths and aspirations, and contribute positively to their whānau, community, and the wider world. Through a culture of care, high expectations, and purposeful pathways, we support our students to navigate their journey with pride, resilience, and direction.





# Te WAKA o Kaipara

## WHANAUNGATANGA OUR PEOPLE



E whakapono ana mātou he mea whakahirahira te whanaungatanga ki ngā mahi ako. Ka whai hononga mātou ki ngā ākonga, ki ngā whānau, ki ngā kaiako, ki ngā kaimahi, ki te hāpori whānui. Ka whai pānga tātou ki a tātou anō kia whakanui ai i ō tātou rerekētanga, kia puāwai ai te wairua whānau. Ko Kaipara taku āhuru mōwai.

We believe that strong relationships are vital to learning. We develop genuine connections with students, whānau, staff, and our wider community. We come together and share experiences, celebrate diversity, and foster family-like bonds by being intentional and inclusive. These bonds of whanaungatanga create for us a sense of belonging at Kaipara College.

**Whakataukī:**  
Whiria te tangata.  
Weave people together.

## AROHA OUR WAY



Ko te manaakitanga, ko te aroha te tūāpapa o ngā hononga katoa. E whakapono ana mātou, he mana tō ia tangata, a, ka taea e tātou katoa te eke i ō tātou tāpuhipuhi. Ka tū tātou i roto i te tika me te pono, a, ka noho tātou i roto i te hūmārie. Me whakamana i te tangata, ahakoa ko wai, ahakoa nō hea.

We approach all interactions with kindness, caring and empathy. We have high expectations of others, and ensure that their mana is maintained with each warm and demanding encounter. We are accountable and responsible for our actions. We show respect for others, their cultures, their beliefs, and we act with integrity and humility.

**Whakataukī:**  
Aro ki te hā o te tangata.  
Pay heed to the breath that is within us all.

## KAITIAKITANGA OUR PLACE



Ka tiaki tātou i a tātou anō i te ao tūroa, i te ao ipurangi hoki. Nō tātou te whiwhi ina ka whai wāhi atu tātou ki ngā mātauranga o te ao Māori. Nā reira, me tiaki i ēnei akoranga, ka tika. Tiakina te wananga, tiakina a Papatūānuku, tiakina te whānau whānui o Kaipara.

We take care of our learning environments, and are considerate in both natural and virtual spaces. We protect people's right to education, while understanding that some knowledge is a privilege to have, that we must care for with respect and gratitude. We look after our school, we look after the environment, and we look after each other.

**Whakataukī:**  
Manaaki mātauranga, manaaki taiao, manaaki tāngata.  
Care for knowledge, the environment, and people.

## ANGITŪTANGA OUR SUCCESS



Ka tūwhitia e tātou te hopo kia mairangatia ai te angitu. Ka hapaitia ngā iho pumanawa o tēnā, o tēnā. Ka whakamaui e tātou te pae tata i ā tātou e anga pae tawhiti ana. Kei a tātou katoa te pitomata, ka taea e tātou ngā mea katoa.

We aspire to reach personal excellence in all we do. We value creative and innovative ideas, and solutions. We set challenging goals that motivate us as we strive toward success. We expect that our people will achieve, and we enjoy celebrating our accomplishments.

**Whakataukī:**  
Ehara taku toa i te toa takitahi, engari kē he toa takitini.  
My success is not mine alone, but that of the collective.

## Our WAKA Values



# Ngā Tira o te Waka o Kaipara

## (Our Tira System)

In 2025, Kaipara College proudly launched Ngā Tira, our revitalised house system that brings the spirit of Te WAKA o Kaipara into everyday school life.

Ngā Tira translates to 'the travelling parties'. It reflects the journey we undertake together as a school community on a single waka. Each Tira represents a significant part of a waka, linking our vision of Eke Panuku, Eke Tangaroa (Navigate to Success) to the daily experiences of our students and staff.

### Our Four Tira

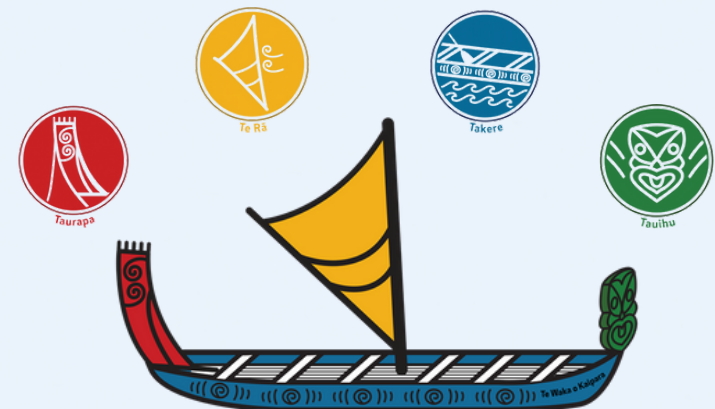
- Taurapa (Red): The stern of the waka, symbolising stability and resilience.
- Tauihu (Green): The bow of the waka, representing leadership and direction.
- Te Rā (Yellow): The sail, embodying energy and aspiration.
- Takere (Blue): The hull, signifying strength and unity.

Every student and staff member belongs to one of the four Tira, building a sense of identity and belonging that lasts throughout their time at Kaipara College. The Tira system strengthens collaboration, healthy competition, and connection across all year levels.

### Key features include

- Tira assemblies and celebrations that acknowledge achievements, set goals, and build strong relationships.
- Major Tira events each term, with points contributing to the annual Tira Trophy.

Ngā Tira is more than a house system. It is a framework for belonging, leadership, and collective success. By weaving our waka-inspired structure through the life of the school, Ngā Tira honours our shared journey and ensures every person feels part of Kaipara College's vibrant and connected community.





# Ngā Tira o te WAKA o Kaipara



# Ngā Tira o te WAKA o Kaipara



**Taurapa**

**"The sternpost"**

"E tū me he **taurapa** whakairoiro."

"Stand like an ornately carved **sternpost**."

This metaphor emphasises not only the importance of standing firm and confident but also the beauty and craftsmanship that come with it. Just as a finely carved sternpost enhances the aesthetics and strength of a waka, standing proudly embodies resilience, elegance, dignity and strength.



**Tauihu**

**"The prow"**

"Mā te **tauihu** o tōu waka e ū te waiora, kia mahue atu ngā mea whakahirahira i roto i te kōriporipo."

"May the **prow** of your canoe, cleave the waters of life and leave in its wake, mighty deeds."

As you navigate to success, may you look back at your life and reflect upon all of your achievements.



**Takere**

**"The hull"**

"E kore e ngaro he **takere** waka nui."

"The **hull** of a great waka will not be lost."

This whakataukī signifies that the core or foundation of something significant will endure despite challenges. It's a reminder of resilience and the lasting strength of what's truly important.



**Te Rā**

**"The sail"**

"Hūtia te puna, tākiritia hoki **te rā**."

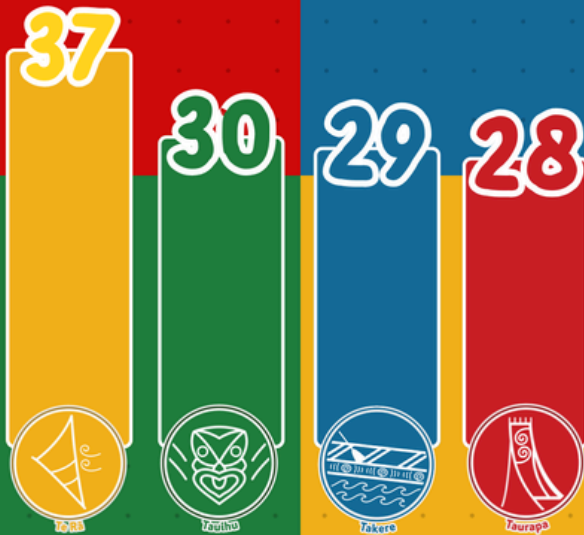
"Raise the anchor and unfurl **the sail**."

This is a call to action, urging one to embark on a journey or venture forth. It encapsulates the idea of readiness and initiative, suggesting that it's time to set sail, leave behind constraints, and embrace new opportunities.



# Ngā Tira o te WAKA o Kaipara

## OVERALL TIRA POINTS TABLE



**Congrats to Te Rā,  
our 2025 Tira toa  
with 37 points!**

## Who will take home the WAKA in 2026?

Tira points can be earned at events throughout the year, as well as through attendance, and our Māori language education kaupapa, Poutama Reo.

**Our  
Tira  
Trophy**



## Upcoming Tira Events for 2026

**TERM 1**  
Theatre Festival/ Film Festival  
Touch Athletics  
Spelling Bee  
Tabloids  
Chocolate Scavenger Hunt

**TERM 2**  
Family Feud  
Volleyball  
Arts Week  
Wearable Arts  
Quiz  
Master Chef

**TERM 3**  
Chess  
Mathex  
Gala Day  
3 v3 Basketball  
Book / Movie Week  
Can Food drive

**TERM 4**  
Pavement Art  
Science Fair  
Mini Sports Day

**WHO WILL BE OUR TIRA TOA?**

# Our Curriculum

At Kaipara College, we offer a rich and balanced curriculum tailored to all learners:

- English, Mathematics, Science, Social Sciences, and Health & Physical Education are central to our junior programme (Year 9 and Year 10).
- We have an emphasis on essential foundational literacy and numeracy skills through all courses to ensure our students can confidently access learning in a range of contexts.
- Junior students have the opportunity to explore a range of subjects by rotation or choice. These include Te Reo Māori, Performing Arts, Music, Visual Art, Horticulture, Digital Technology, Materials Technology, Sports, Sports Academy, Enterprise, Digital and Visual Communication and Food Technology. These courses allow students to discover their passions and prepare for specialised studies in later years.
- Students enjoy a range of opportunities through their learning including year level and subject specific camps, trips, and performances and external organisations who visit and deliver workshops and expert experiences.
- Senior students (Year 11 - 13) tailor their learning pathways by selecting courses aligned with their aspirations, supported by our careers and guidance team and their kaitiaki (dean) and kaiārahi (whānau teacher). We offer a wide range of courses for students who need specific subjects for their pathways, we are able to support their application for courses through Kōtui Ako (The Online Learning School) - please note, application does not guarantee entry.
- For a full overview of our curriculum and the courses available in 2026, please visit the [Kaipara College Learning Areas page](#)





# Te Waka Eke Panuku (Our Pastoral Curriculum)

Te Waka Eke Panuku is the foundation of our pastoral care system and is woven into the rhythm of each day through Whānau Time. This is a purposeful space where students are known, supported, and guided as they navigate their journey through Kaipara College.

## Within Whānau Time:

- Students learn to live and lead through Te WAKA o Kaipara, our school values, in vertically structured whānau classes.
- Tuakana teina relationships are fostered, creating genuine peer guidance and mentoring across year levels.
- Each whānau class belongs to one of our four Tira (travelling parties), offering students a smaller community within the wider school. This structure strengthens identity, belonging, and opportunities for student leadership.
- Learners develop core skills in care, growth, contribution, and leadership.
- Academic mentoring takes place regularly, including goal setting, NCEA tracking, and personalised guidance.
- Activities that support wellbeing, social and emotional learning, cultural identity, and school spirit are an integral part of the programme.

Te Waka Eke Panuku ensures that every student at Kaipara College is seen, supported, and guided. It is our daily commitment to growing confident, connected young people who can navigate their futures with clarity and pride.





# Rugby Academy

The Rugby Academy is designed to develop more than just rugby players – our goal is to grow confident, resilient young people who demonstrate our Kaipara values on and off the field. Across Terms 1 and 2, students will take part in a structured programme that focuses on:

- Core Rugby skills and game understanding
- Strength, conditioning, and agility development
- Leadership, teamwork, and positive culture
- Holistic athlete development, including mindset, nutrition, recovery and wellbeing

The programme will also feature guest speakers and external providers who will speak to leadership, culture, nutrition, and mental skills, helping students connect their learning in sport to life beyond the game.

## Programme structure – 2026

The Rugby Academy will run on Tuesdays during Terms 1 and 2, during curriculum time:

- Senior students (Years 11–13): Period 3
- Junior students (Years 9–10): Period 4

Each session will be approximately 60 minutes and will include a warm-up, a focused skill or physical development block, and a short reflection linking learning back to our school values.

## How to Apply

The Rugby Academy is open to all Kaipara College students who are committed to improving themselves as players and as people. To be considered, students will need to [fill in this application form](#).

All Academy members are expected to uphold the Kaipara College values at all times:

- **Whanaungatanga** – strong relationships, teamwork, inclusiveness and belonging
- **Aroha** – care, respect and compassion for self, others and our wider community
- **Kaitiakitanga** – responsibility for personal conduct, team culture and our rugby legacy
- **Angitūtanga** – striving for success through hard work, discipline and continuous improvement

Students who do not meet these expectations may be removed from the programme.





# Key Start Dates 2026

Thursday  
22 January

- School office opens

Monday  
26 January

- Auckland Anniversary Day (PUBLIC HOLIDAY) **School Closed**

Thursday  
29 January

- **Year 9 Orientation (DAY 1) and Pōwhiri (SCHOOL BUSES WILL RUN AM & PM)**  
Yr 9 students are required to bring their device (BYOD\*), wear full school uniform & additionally bring PE clothes, togs, towel, hat and sunscreen for both orientation days.
- Senior Course Confirmation 10am - 1pm

Friday  
30 January

- **Year 9 Orientation (DAY 2) (SCHOOL BUSES WILL RUN AM & PM)**
- New to Kaipara College Year 10 - 13 student orientation, from 9am - 10:30am. Please wear full school uniform.
- Senior Course Confirmation 10am - 1pm

Monday  
2 February

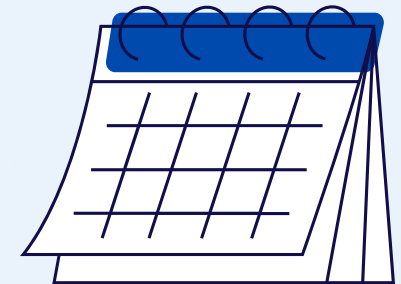
- **Whole School Attends** - All year levels welcomed back officially for 2026!  
All students to attend in full school uniform. Bring all stationery and BYOD\*

Friday  
6 February

- Waitangi Day (PUBLIC HOLIDAY) **School Closed**

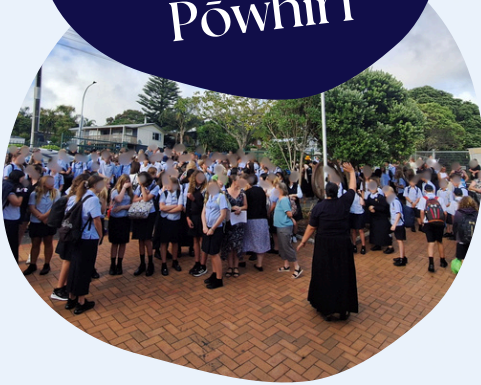
How do we  
stay up to date  
with all the key  
events during  
the year?

See all the information about how to stay up to date on all the school key events, activities and announcements on the Staying in Touch pages that we share a little later in this Pānui document.



# Year 9 Pōwhiri

What to  
expect at our  
Year 9  
Pōwhiri



## Year 9 Pōwhiri

Date: 29 January

Time: 9.00am

Venue: Kaipara  
College Hall

### Notes for adults in attendance

- If there is an adult **kaikaranga** (caller) among the whānau of our Year 9 students, they should come to the front
- If there is an adult **kaikōrero** (speaker) who is able to speak on behalf of the Year 9 students and their whānau, they should make themselves known to *Whaea Bri* as they prepare the group for the pōwhiri process.
- The kawa of our school is **paeke**.

### Before the pōwhiri

- Whaea Bri, or another member of staff will get your attention and explain the pōwhiri process to you.
- While you are gathering, this is a good opportunity to agree upon a *waiata* (song) to sing in support of your **kaikōrero**.
- We will select a group of students to acknowledge the **taumata** (speakers).

### At the start of the pōwhiri

- You will gather at the entrance of the school. **Wāhine** (females) gather toward the front, **tāne** (males) behind and around the wāhine.
- You will be called into the hall by *Whaea Bri*. Our Tū Rangatira students will welcome you with a haka pōwhiri.
- Students will first acknowledge our **taumata** in accordance with the tikanga of our mana whenua. This is usually done through **hongi** (pressing of noses).
- Students will be guided to find their seats. The adult **kaikōrero** along with other **tāne** should occupy the front seats. The **wāhine** should occupy the seats behind them.
- A student will lead our school **karakia** (blessing).
- A **kaumātua** will speak on behalf of Kaipara College. The staff and students will sing to support our speaker.
- An adult **kaikōrero** will speak on behalf of the Year 9 students and whānau. Year 9 students and whānau will sing the song they agreed upon, to support that speaker.
- Final words will be given to our **taumata**.
- We will select a group of students to acknowledge the **taumata** (speakers).
- Our Principal, Jane Coup, will address everyone.





# New Student Meet & Greet Evening

**Whānau & Students  
are invited to join us.**

On Tuesday 24 February we will be having our Year 9 and new Kaipara College students across other Year levels Meet and Greet Evening and a BBQ following the formalities.

The purpose is for you to meet your child's Kaiārahi (Whānau teacher) and to be informed of general information related to school. Please bring your student/s with you. Other family members are more than welcome to join you and your student/s at this event.

Our Principal will speak, as will several other key staff members. You will then join your student's Kaiārahi group and enjoy a sausage sizzle. Sausages, bread, sauce and beverages will be provided.

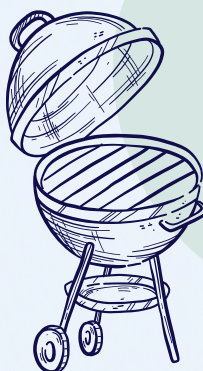
Any questions you may have about the new year at Kaipara College can be answered at this time.

We are looking forward to seeing you all.



New students of all year levels are welcome to attend with their whānau

**When:**  
**Date: Tuesday  
24 February 2026**  
**Time: 6.30 - 8pm**  
**Venue: School Hall**



Join us for a simple BBQ.  
BBQ sausages in bread will be provided following the official introductions.

- Get to know Kaipara College
- Meet our staff
- Ask questions
- Get to know the school community
- Share in some kai



# Administration Matters

## School Fees

The Kaipara College School Board has opted into the Ministry of Education donation scheme for 2026. This means that instead of asking for a donation towards school fees in 2026, these will be covered by the Ministry of Education.

There are still some areas of learning that require some financial contribution due to the large components of the course(s) that have a 'take home' component to them. Any subject contributions will be invoiced to families towards the end of Term One. Payment of these invoices is necessary to ensure students can complete courses.

Parents will also be invoiced for the Year 9 Camp happening in November. To set up a payment plan for the camp contact [accounts@kaipara.school.nz](mailto:accounts@kaipara.school.nz)

### Methods of payment

There are several options for making payments to Kaipara College. If a payment is being made manually by students, then this can be done by visiting the Student Centre between 8:00am-3.30pm, Monday to Friday. Cash or Eftpos. Parents can make a payment at the Accounts Office between 8:00am-3.30pm, Monday to Friday. Cash or Eftpos. Credit cards are not accepted.

For electronic payments please use the following account:

Kaipara College Board 12-3139-0002717-00

Please include your student's name and the activity, event or purpose of payment, e.g. Hockey

### Financial Assistance

If you require financial assistance from Work and Income for stationery requirements or uniform costs for the 2026 year, please make an appointment with Work and Income by calling 0800 559 009 prior to the start of Term 1, to avoid delays.

## Where do I find more information?

[kaipara.school.nz](http://kaipara.school.nz)

Our website is being updated throughout the year with information. It is always the first place we recommend going to for more detail on an area of school life you wish to know more about.

### Kaipara College

36 Rautawhiri Road, Helensville, 0800

Phone: 09 420 8640 | [info@kaipara.school.nz](mailto:info@kaipara.school.nz) | [kaipara.school.nz](http://kaipara.school.nz)



The school office will close midday on Thursday 11 December 2025 and will reopen on **Thursday 22 January 2026.**





# Key Term Dates - An Overview

## TERM 1

### JANUARY

- 22 - School Office Opens
- 26 - Auckland Anniversary Day  
PUBLIC HOLIDAY
- 27 - Teacher Only Day
- 28 - Teacher Only Day
- 29 - Year 9 Orientation (DAY 1) & Pōwhiri  
Senior Course Confirmation XXX
- 30 - Year 9 Orientation (DAY 2) &  
New Yr 10-13 Student Orientation  
(9am-10:30am)  
Senior Course Confirmation XXX

### FEBRUARY

- 2 - Whole School - All Year Levels  
return for 1st official day of school
- 6 - Waitangi Day PUBLIC HOLIDAY
- 21 - Year 9/10 Have a Go Day
- 23 - Whānau Class & Individual  
School Photos
- 24 - Meet the New Parents Evening

## TERM 1 & 2

### MARCH

- 3 - NCEA Information Evening
- 6 - School Photo Catch up Day
- 16 - Individual Education Meetings  
(IEMs) with whānau (No classes)

### APRIL

- 3-19 - Term Break School Holiday
- 20 - First Day of Term 2
- 27 - Anzac Day PUBLIC HOLIDAY

### MAY

- 25-29 - Literacy & Numeracy CAAs  
(Event 1)

### JUNE

- 1 - King's Birthday PUBLIC HOLIDAY
- 25 - Team/Group Photos
- 23 - Senior Subject Meetings

## TERM 2 & 3

### JULY

- 2 - Open Evening for 2026 Enrolments
- 4-19 July Term Break School Holiday
- 10 - Matariki PUBLIC HOLIDAY  
during term break
- 20 - First Day of Term 3

### SEPTEMBER

- 7-11 - Snr Derived Grade Exams Week
- 14-18 - Literacy & Numeracy CAAs  
(Event 2)
- 14-20 - Te Wiki o Te Reo Māori (Māori  
Language Week)
- 22 - Junior Subject Meetings
- 26 Sept - 11 Oct Term Break School  
Holiday

## TERM 4

### OCTOBER

- 12 - First Day of Term 4
- 21 - School Sports Prizegiving
- 26 - Labour Day PUBLIC HOLIDAY
- 29 - Senior Prizegiving (Yr 12 & 13)
- 30 - Seniors on Study Leave

### NOVEMBER

- 11-13 - Year 9 Camp Week

### 10-4 December - NZQA Exams

### DECEMBER

- TBC Junior Exams
- 11 - Junior Celebration of Learning
- 11 - Last Day for all Junior Students



More than 20  
exciting Tira events  
over the 2026 year.

For a list of proposed  
events events  
see page 9



**Please Note:** Dates are subject to change and will be confirmed closer to the time via our key communication channels



# Our Team Supporting Your Student

Introducing our Tira  
Kaitiaki (Deans)



**Te Rā Kaitiaki  
To be Confirmed**



**Taurapa Kaitiaki  
Alison Howie**



**Tauihu Kaitiaki  
Laura Clayton**

**Takere Kaitiaki  
Susie Garlick**



## Who do I go to with a question or when I need support?

Your Student's Whānau Teacher or  
Subject Teacher is the best first point  
of call for support or if have questions  
at any stage.

Your Student's Kaitiaki (Dean) is  
a great point of contact for  
support and connection  
throughout the school year.

Our team in the Hauora Hub &  
the Student Centre can be a  
valuable support network for  
students and whānau.

Our Faculty Heads and Senior  
Leadership team can offer  
support alongside our teaching,  
and Kaitiaki team.



## Where do I find contact details for staff?

The best places to find any  
contact details you may require  
are the following places.

- **On our Website**
  - Go to Our School
  - Select Contact Us/ Report Absence
- **On the Caregivers Portal**



# Whānau / Visitors & the Student Centre

- ALL visitors including whānau and caregivers MUST report to the Front Office / Reception before entering school grounds. This includes when you are dropping items off or picking up your student early from school. These rules ensure safety for all.
- ALL visitors must sign in at the Front Office / Reception unless directed. We ask you also sign out as you leave school grounds for Health and Safety purposes
- Whānau, Caregivers and other Visitors are required to book appointments to meet with a staff member or one of our Support Team. Our staff are unfortunately not available at all times for unexpected one-on-one meetings, but we will connect you with the team to arrange a meeting & follow up as quickly as we can.
- Whānau/Caregivers are not allowed on school grounds to drop off or meet with your student during school hours. Please drop off items or report to the Front Office. Support us to support your student being in class - do not ask your student to meet you in the Front Office. We will send items to them on your behalf.
- The Student Centre assists with the following: Attendance, Late Arrivals/Early Pick-Ups, Lost Property, Student IDs, Payments, Health/Sick Bay, Support Services & general student support.

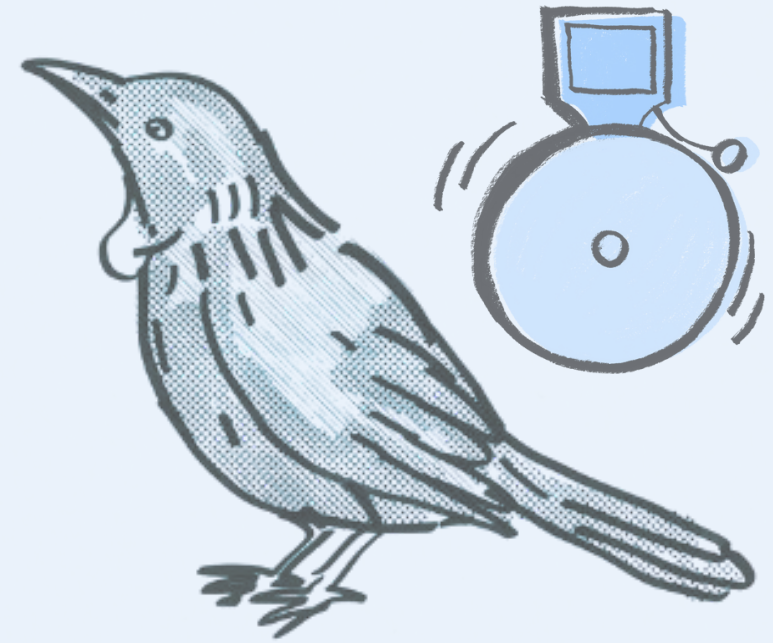
**FYI: Students are not permitted to leave the school grounds before school finishes for any reason without the Student Centre receiving approval to sign the student out early from an official caregiver. Call 09 420 8640 ext 810.**



# The School Day

## OUR DAILY TIMETABLE

Time	Juniors (Years 9 and 10)	Seniors (Yrs 11, 12 and 13)
8:45AM	Period 1A (45 mins)	Period 1 (90 mins)
9:30AM	Period 1B (45 mins)	
10:15AM	Whānau	
10:45AM	Interval	
11:15AM	Period 2 (60 mins)	Period 2 (60 mins)
12:15PM	Period 3 (60 mins)	Period 3 (60 mins)
1:15PM	Lunch	
2:00PM	Period 4 (60 mins)	Period 4 (60 mins)



Lessons begin at 8:45 AM and end at 3:00 PM, featuring 4-5 distinct learning periods, a morning whānau time, and breaks for interval and lunch. Uniquely, our junior (Years 9–10) and senior (Years 11–13) timetables differ slightly to optimise learning experiences and needs for these year levels.

**Juniors:** Two 45-minute blocks in the morning (Period 1A and 1B) followed by three 60-minute periods.

**Seniors:** One 90-minute block (Period 1A and 1B) and three 60-minute periods.

Our school bell, the iconic tui bird call, signals transitions between these sessions.



# Attendance

## Why does **every day** matter?

When your student misses school they miss out on opportunities to...

Our plan for attendance will be posted on the website in Jan 2026



Learn



Build friendships



Develop life skills

## Days missed = years lost

A day here and there doesn't seem like much but...

When your child misses just...

they miss weeks per year

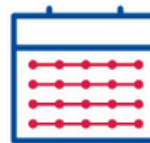
and years over their school life

**1** day per **fortnight**



=

**4** weeks



=

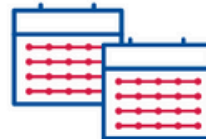
Over **1** year missed

**1** day per **week**



=

**8** weeks



=

Over **2.5** years missed

# Reporting at Kaipara College

Kaipara College is committed to regular, clear, and meaningful communication about each student's progress. Our reporting system combines ongoing updates with dedicated opportunities for students, whānau, and teachers to meet, reflect, and plan next steps together. This approach strengthens our shared commitment to learning, wellbeing, and success.

## Our 2026 Reporting Overview

Our schedule for 2026 is designed to provide regular, timely feedback throughout the year. This includes:

**Fortnightly Reports:** Short updates every two weeks on engagement, progress, and alignment with Te WAKA o Kaipara (Our School Values). These help identify concerns early and celebrate successes in real time. Whānau of students receiving a '1' or '2' are contacted directly by teachers to support our students to meet expectations.

**Written Reports:** Comprehensive summaries of academic achievement and next steps. Senior students receive their full written report in Term 2; junior students receive theirs early in Term 3.

### Interviews:

- Individual Education Meetings in Term 1
- Senior Subject Interviews in Term 2
- Junior Subject Interviews in Term 3

**Achievement and Attendance Summaries:** End of term updates showing overall progress, achievement, and engagement.

This comprehensive approach ensures that students and whānau remain informed, supported, and connected throughout the school year, with multiple opportunities to review progress and plan forward together.





# Interviews & Meetings

## Individual Education Meetings (IEMs)

IEMs take place early in the year and involve the student, their whānau, and their whānau class teacher (Kaiārahi). These meetings are student led and are designed to:

- Build a strong and supportive relationship with your student's Kaiārahi and share important information about who your child is.
- Explore your student's goals for the year and consider future learning and career pathways.
- Develop a clear plan to support these goals and outline the next steps in learning and wellbeing.

IEMs lay the foundation for strong home and school connections and help ensure every student begins the year with clarity, purpose, and direction.

## Subject Teacher Interviews

Subject Teacher Interviews occur later in the year, typically in the week following the release of written reports. These meetings involve your student and their subject teachers, and provide an opportunity to:

- Celebrate progress and discuss any challenges or barriers to learning.
- Identify any support or adjustments that may be needed.
- Review the goals set earlier in the year and establish new goals for the remainder of the year.
- Plan next steps that will ensure continued academic and personal growth.

These meetings deepen understanding of each subject, reinforce learning expectations, and help students take ownership of their progress.

## Why these meetings matter...

IEMs and Subject Teacher Interviews are important touchpoints in our school year. They enable reciprocal learning between home and school, ensure clarity about expectations, and give whānau a chance to share insights, aspirations, cultural knowledge, strengths, and any concerns.

We strongly encourage all parents, caregivers, and whānau to attend both types of meetings, particularly if issues have been identified through fortnightly reports or written reports.

Upcoming dates for these meetings can be found in the Key Term Dates section of this Pānui. Booking instructions will be emailed to whānau ahead of each event.



# Fortnightly Reports

To help you stay up-to-date with how your student is tracking and to flag any concerns, you will be sent fortnightly reports on your student's progress, grading them on both alignment with school values and academic achievement. You will also receive a written report just before the subject meetings. Here is a sample of page 1 of the fortnightly report.

## Sample Report

All Subjects										
	T1	T2	T3	T4	Wk 21	Wk 23	Wk 25	Wk 27	Wk 29	Year
School Values	3.3	3.2	3.3		3.2	3.3	3.3	3.4	3.6	3.3
Academic Progress	3.4	3.2	3.3		3.2	3.3	3.3	3.4	3.4	3.3

Citizenship					Wk 21	Wk 23	Wk 25	Wk 27	Wk 29	Year
Year 9	Attendance				100%	100%	100%	100%	100%	89%
Teacher Name	School Values				n/a	3	3	3	3	3.0
	Academic Progress				n/a	3	3	3	3	3.0

English					Wk 21	Wk 23	Wk 25	Wk 27	Wk 29	Year
Year 9	Attendance				86%	100%	100%	100%	88%	93%
Teacher Name	School Values				3	4	4	4	4	3.4
	Academic Progress				3	4	4	4	4	3.4

Health & Physical Education					Wk 21	Wk 23	Wk 25	Wk 27	Wk 29	Year
Year 9	Attendance				100%	100%	100%	88%	88%	94%
Teacher Name	School Values				3	3	3	4	4	3.5
	Academic Progress				3	3	3	4	4	3.6

Mathematics					Wk 21	Wk 23	Wk 25	Wk 27	Wk 29	Year
Year 9	Attendance				100%	100%	100%	100%	88%	95%
Teacher Name	School Values				4	4	4	4	4	3.8
	Academic Progress				4	4	4	4	4	3.9

1 = Concerns 2 = Developing 3 = Meets Expectations 4 = Exceeds Expectations  
No grade is shown if the teacher was away or the student is taking a Kotui Ako Class.  
Kotui Ako students receive separate reports throughout the year.

Descriptors for each grade were provided in the grading rubric also attached to your first email about reports.

**ANGITŪTANGA**  
**OUR SUCCESS**



[Click this link for the criteria the teachers use when grading students.](#)





# Travelling to School

We know there will be many ways your student/s will travel to school. These might include: private vehicles, public or school bus/es, bikes or scooters, by foot, arranged private transport, with you, family, friend or on their own. We hope to cover all the key information about travel to Kaipara College in this section so all our students arrive at school and then home again safely.

## School Entrances

We have two key school entrances here at Kaipara College.

Our Main Gate/Entrance is at:

### **36 Rautawhiri Road.**

This gate is always available as a pedestrian entrance for students. This gate is an entrance only for staff, visitors and registered student vehicles who are parking in our upper carpark zones. **Important Note:** This gate is a **No Drop Off Area** for safety.

**See Recommended Drop of Zones**

Our secondary entrance is **113 Awaroa Road**. This entrance is open to pedestrians between 7:30am and 9am and again between 3pm and 5:30pm. Parking & vehicle access is restricted and requires a gate access code. This parking and access is used for Staff and Contractors and is not available to students and whānau for general vehicle access without prior approval.

## Recommended Drop off Zones

There are limited drop-off points near the main entrance, particularly with vehicles parking on the roads. The closest pull-in drop-off location is the Helensville Rugby Club car park on the corner of **Rautawhiri & Awaroa Roads**.

We understand this is not ideal in wet weather, however the Ministry of Education has identified the turn-around area in our school grounds as unsafe for pedestrians when used as a drop-off point.

This is why you will see signage instructing a **no-drop-off zone at our main Rautawhiri Gate**.

We recommend planning and discussing in advance your safe drop off / pick up locations with your student/s so you are prepared for all weather and scenarios each day.



## Buses

The **eligibility criteria** for school bus transport is **very strict**. Please read the eligibility criteria on the following page and on our website. A student **who is not eligible upon enrolment will not be assigned to a school bus**. It is important to note the eligibility criteria changes between primary school and high school, and is based on distance from school, so your child who was eligible for a school bus at primary school may not be eligible for school bus transport at high school.

In the afternoon, our students are checked onto buses by teachers/staff, and only students whose names are on the bus route roll will be able to board the bus.

Review the bus Information on the website which details the school bus routes. In our additional bus transport section we will also cover the public bus services in the area.



# School Bus Information



## School Buses - Eligibility Applies

Students must meet all three eligibility criteria below in order to access school transport assistance. Eligibility applies from the first day of attendance. Having met the Ministry's eligibility criteria, students are eligible for one school bus route only, that which directly services the student's residential address. Students are not able to swap between school bus routes based on convenience or to travel to alternative locations to their home address, including places of work.

### Criteria 1

The school must be the closest state or state integrated school the student can enrol at.

### Criteria 2

Students in years 9-13 must live at least 4.8kms from the school, over the shortest public road or pedestrian route from home roadside gate to the school's front gate.

### Criteria 3

There must be no suitable public transport options. More detail on eligibility can be found on the school's website under the Administration Matters section.

## Kaipara College School Bus Routes

Route Number	Route Name	AM Departs	Commences
5551 AM/PM	Shelly Beach	Shelly Beach	7:50am
5552 AM ONLY	Crossland-Fordyce	Crossland Road	7:30am
5553 AM/PM	South Head	Te Kawanui Gate	7:25am
5554 AM/PM	Muriwai	Muriwai Valley Rd Cnr	7:35am
5556 AM ONLY	Peak Road	Stockyards, Peak Rd	7:45am
5557 AM/PM	State Highway 16	Cnr Foster & School Rd	7:45am
5558 AM/PM	Ararimu Valley	Zanders Road	7:35am
5559 AM ONLY	Makarau Valley	Makarau & Kanohi Rds	7:25am
5560 AM/PM	Gibbs Farm	Gibbs Farm Gate	7:45am
5561 AM ONLY	McLachlan/Waitoki	Jordans Road	7:30am
5562 AM/PM	Peak/Inland Roads	Cnr Sheffield & Inlands Rds	7:30am

It is important to note that you must keep us updated with your current residential address. If you move or your living situation changes in some way please get in touch so we can support you with updating the system and any related bus requirements your student may have.





# Additional School Bus Information

## School Bus Routes

In 2026, it is expected that nearly 500 students will travel to and from Kaipara College with our school bus transport partners, Ritchies Transport. On enrolment, students will be automatically assigned bus routes, based on eligibility and their primary residential address. If you have any questions at all about school bus services or eligibility please contact the school office. Ph: 420 8640 (ext 800) or email us at: [info@kaipara.school.nz](mailto:info@kaipara.school.nz) See the following page for details regarding the Auckland Transport School Bus option available along one route.

## Key Bus Information for all our Students & Whānau

- Students are unable to access any other school bus route other than the one they are eligible for based on their primary residential address. If your student has dual households please ensure we have this information and with proof of address so we can assign a secondary bus route where needed. Contact us by phone 09 420 8640 (ext 800) or email [info@kaipara.schol.nz](mailto:info@kaipara.schol.nz)
- **Important** to be aware that friends can not travel (even one off) on a school bus with a friend if they are not eligible for the bus. Where a friend needs to travel with your student, alternative transport plans will need to be made.
- **Late or Delayed Buses:** Please make sure you are at your bus stop at least 5 - 10 minutes before the expected arrival time of your bus. Breakdowns and delays are rare, but they can happen. Ritchie's Transport advise the College as soon as they can and we will alert the school community via the SchoolBridge app, email and our Kaipara College Website or social media (Facebook & Instagram) depending on the information to be shared.

## Enrolment Bus Contract



The purpose of the contract is to keep our students safe and to facilitate an efficient School bus service by Kaipara Transport Network. Parents/Caregivers and students should ensure they have read and understood this document, which is to be adhered to for the safety of the bus driver, all students travelling on the bus and other road users.

**All Student School Bus Users & their whānau must agree to this contract before catching a bus. You completed this at the time of your enrolment online.**



# Additional Transport Information

## Auckland Transport (AT) Bus Service AT060 user-pays student bus service from/to: Kumeu/Huapai/Parakai

For those students who reside in the Parakai/Kumeu/Huapai area and are not eligible for the school bus, there is an Auckland Transport dedicated public bus for Kaipara College students. This route runs between Kumeu and Helensville via Parakai. Students require an AT Hop card to use this bus. The route is the AT060 bus and full detail can be found on the AT website: <https://at.govt.nz/bus-train-ferry/timetables/school-bus-timetables?school=kaipara-college>

Please note that the AT060 is not a Ministry School Bus and therefore we have no control over its timetable or operation. When Kaipara College has half days, students will need to catch the 125 public bus or make other arrangements to travel home, as the AT 060 does not adjust its timetable.

## Auckland Transport HOP Cards Locally

In Helensville pre-paid AT Hop Cards can be purchased at the dairy in the block of shops on the corner of Bridge Street and Awaroa Road. Note: the Top Up service for HOP cards is not available at this location. You can find retailers & Top Up Locations on the [AT Hop Retailer Map](#) online. The closest top-up location is in Westgate, but you can top up online at this [link](#). Please note it can take up to an hour for funds to be loaded to the card.



## Bus Assembly: Part of Year 9 Orientation Day 1.



We strongly recommend all new Year 9 students who will utilise school bus transport catch the bus home from school on their first day. On the first day an assembly is held at the end of the day for all bus students where they are allocated to their buses, given guidelines and shown where their bus will be in the bus bay. This helps to relieve student's worries about finding their correct bus, as students are all doing it together, with teacher assistance.

## Kaipara College Student Parking

Information about senior student parking will be shared in the new year once we have an accurate picture of how much staff and visitor parking is required.

If your student drives to school, please let them know they need to be prepared to park on the road for the first couple of weeks. We ask students to use *aro*ha when parking and leave a space of -

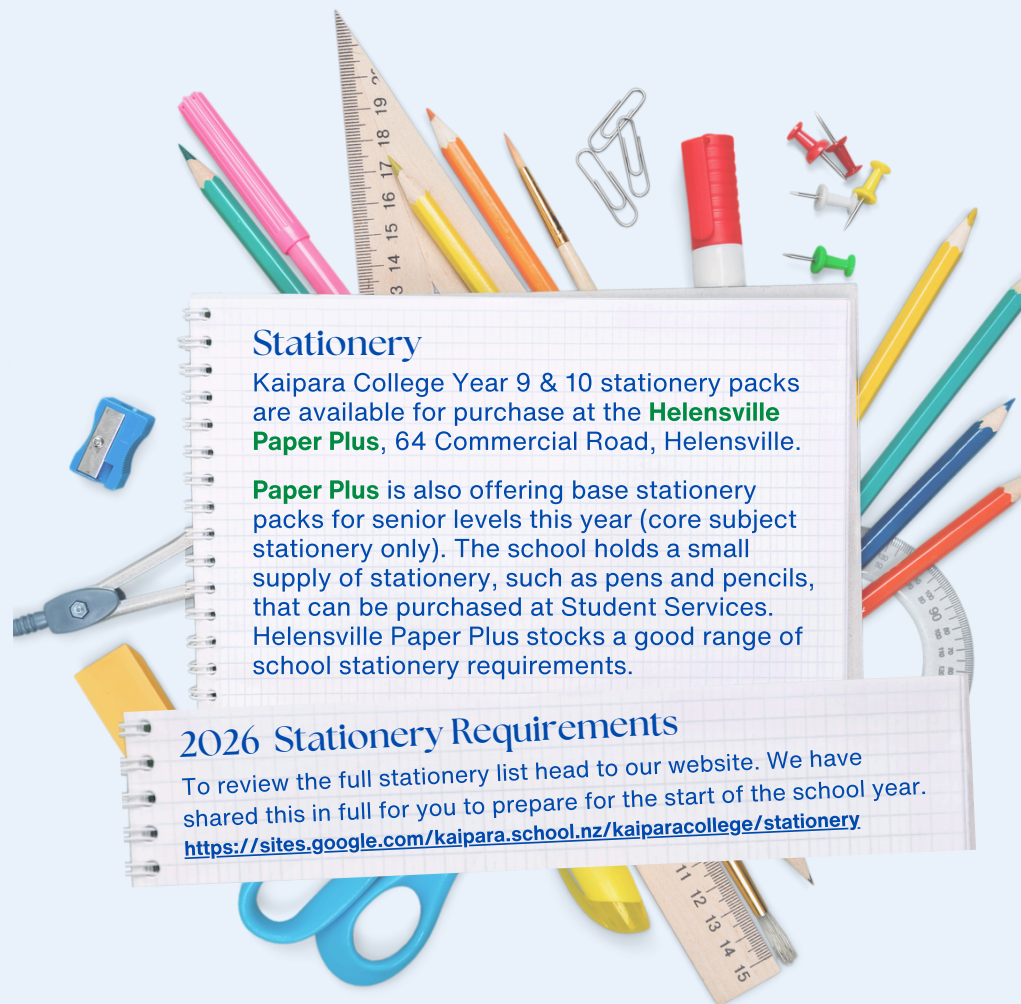
- one metre either side of a driveway,
- and six metres either side of a pedestrian crossing or intersection.

These are legal requirements for roadside parking.





# Student Stationery Requirements



## Stationery

Kaipara College Year 9 & 10 stationery packs are available for purchase at the **Helensville Paper Plus**, 64 Commercial Road, Helensville.

**Paper Plus** is also offering base stationery packs for senior levels this year (core subject stationery only). The school holds a small supply of stationery, such as pens and pencils, that can be purchased at Student Services. Helensville Paper Plus stocks a good range of school stationery requirements.

## 2026 Stationery Requirements

To review the full stationery list head to our website. We have shared this in full for you to prepare for the start of the school year.  
<https://sites.google.com/kaipara.school.nz/kaiparacollege/stationery>

## Sci-Pad Information

Please note the Sci-pads are assigned/given to students in their first science class of the year. Our HoF of Science will send information via email regarding the Sci-pads including payment information to students and whānau at the start of the year - look for this info. Students do not need to arrive at school with this stationery item and pre-payment is not required.

## What do I Need to Bring on the Orientation Days?

Year 9 students and new Kaipara College students are required to bring the following items for the two Orientation Days:

- **BYOD**
- **Wear full school uniform**
- **PE gear**
- **Togs and towel**
- **Hat and sunscreen**

What does BYOD mean?

**(BYOD)**  
Bring Your  
Own  
Device

paperplus

The Paper Plus team in Helensville have shared the following regarding indicative stationery pack pricing:

**Year 9 & 10 with Calculator is \$74.99**

**Year 9 & 10 without Calculator is \$39.99**

**Year 11 – 13 \$39.99 (this is a basic pack)**



# School Uniform

## Our school is a uniform school.

Students are required to wear correct school uniform at all times.

In rare circumstances, where students may not be able to wear a uniform item, whānau must write a note to the school explaining the circumstances and the school will issue a permit which is only available from the Kaitiaki/Deans office. The school reserves the right to require students not in correct uniform to wear loan items of uniform while at school. The school will not grant permission for students to wear non-uniform items on an extended basis, unless approval has been given by the Deputy Principal in charge of uniform or the Principal. Permission will only be granted in medical circumstances where there is appropriate medical documentation provided.

## Kaipara College Uniform Code

### Guidelines on our uniform and personal grooming:

- Only school sanctioned items are to be worn as part of the uniform. List on following page.
- Year 13 students are permitted to wear 'Number Ones'.  
i.e. a matching navy coloured suit set (pants/skirt) with white blouse/shirt.
- Extremes in personal presentation or adornment that might be considered incompatible with our uniform standards, or is considered a safety issue, is at the discretion of the principal.
- Undergarments (eg. thermals) are allowed to be worn, but must not be visible.
- When wearing the school hoodies the 'hood' must be down at all times. The school shirt or blouse must be worn under the hoodie. Students can wear either the school hoodie or one of the school sanctioned sports' hoodies.
- The school jacket is the preferred option and may be worn year round and in class; however, students may wear either plain navy blue or plain black waterproof jackets (including puffer jackets) to and from school and during interval and lunchtime during terms 2 & 3 only.
- Skirts (knee length) are to be worn at knee length.
- One small nose stud or one small nose ring is permitted.
- Make-up is not to be worn.



*NOTE: We share more uniform information on the following pages.*





# Kaipara College Uniform Item List

- Kaipara Trousers (2 styles)
- Kaipara Shorts
- Kaipara Skirt (long and knee length)
- Kaipara Lavalava (wrap around)
- Kaipara Shirt (long and short sleeve)
- Kaipara Blouse (long and short sleeve)
- Kaipara Ribbed Jersey
- Kaipara Fleece Top
- Kaipara Blazers
- Kaipara Jackets  
(Fleece lined and a lighter supporters' jacket)
- Kaipara Cap (not to be worn in class)
- Kaipara Bucket Hat (not to be worn in class)
- Kaipara Beanie (not to be worn in class)
- Black or White Socks or Black Tights
- Kaipara Tie
- Plain flat-soled, totally black LACE UP  
Shoes or high tops (no ankle boots)
- Kaipara College Junior PE Uniform:  
Blue shorts and navy/red top. Compulsory for Yr 9 & 10
- Kaipara Scarf
- Kaipara Umbrella

The above list is all of the 2026 official sanctioned uniform items. This can always be found on our website along with additional uniform information.



## Where to Buy:

**The School Uniform Shoppe** has a store onsite at Kaipara College where uniform items can be purchased or ordered. The uniform shop is located near the school front office/reception.

**Purchasing Online:** Uniform items can be purchased online at [www.theuniformshoppe.co.nz](http://www.theuniformshoppe.co.nz) and collected from the onsite store, although visiting the onsite uniform store for a fitting of an item first is always recommended.

THE UNIFORM SHOPPE	
THE SMART CHOICE	
STORE HOURS	
EFFECTIVE 10 MARCH 2025	
<u>Monday:</u>	CLOSED
<u>Tuesday:</u>	1.15pm - 2.00pm (during lunch time)
<u>Wednesday:</u>	3.00pm - 4.30pm
<u>Thursday:</u>	1.15pm - 2.00pm (during lunch time)
<u>Friday:</u>	8.00am - 9.00am

### Uniform Onsite Store Methods of Payment:

Eftpos, Credit Card, Cash and layby with a small deposit, are available at the shop. Quotes for Income Support can be given. Please note, The Uniform Shoppe is an independent supplier, separate to Kaipara College so payment is made directly to The Uniform Shoppe and not to the school.



# School Uniform continued

## SUMMER 2026 UNIFORM STORE HOURS



### SPECIAL SUMMER OPENING HOURS

Wed 14 Jan: 10am - 3pm

Thu 15 Jan: 10am - 3pm

Fri 16 Jan: Closed

CLOSED SATURDAY & SUNDAY

Mon 19 Jan: 10am - 2pm

Tue 20 Jan: 12pm - 4pm

Wed 21 Jan: 10am - 2pm

Thu 22 Jan: 12pm - 6pm

Fri 23 Jan: Closed

Sat 24 Jan: 10am - 2.00pm

CLOSED SUNDAY

Mon 26 Jan: Closed (PUBLIC HOLIDAY)

Tue 27 Jan: 10am - 4pm

Wed 28 Jan: 10am - 1pm

Thu 29 Jan: 8am - 12pm

Fri 30 Jan: 8am - 12pm

CLOSED SATURDAY & SUNDAY

## Frequently Asked Uniform Questions:

- **Can the sole of my student's school shoes be a different colour?**  
No, the upper and sole of the shoe must both be black to comply with the uniform code.
- **I cannot find the KC Hoodie uniform item for my student. Where do I buy one of these?**  
The hoodie is no longer an item you can purchase and is being phased out of uniform across the school. Our Kaipara fleece top replaces this uniform item. Students with existing Hoodies will be allowed to wear these.
- **Is there anywhere else I can go to try on the uniform items as I can't make it to The Uniform Shoppe at Kaipara College?**  
No - The Uniform Shoppe at Kaipara College is the only place you can try on & see uniform items.
- **Is it possible to get a quote for the uniform?**  
Yes - the team in The Uniform Shoppe can prepare any quotes you may need for uniform items. The recommendation is to stop in to see the team or email [kaiparashop@sas.co.nz](mailto:kaiparashop@sas.co.nz).

For any other query please email:  
[kaiparashop@sas.co.nz](mailto:kaiparashop@sas.co.nz)





# Mobile Learning Devices

## Bring Your Own Device (BYOD) at Kaipara College

All students need a personal device and charger each day to support their learning.



### Choosing a device

A laptop is the most versatile option for secondary study, particularly for subjects that use specialist software (Digital Technology, the Arts, Media Studies, Technology, and DVC).

A Chromebook is also suitable for many students and works well for everyday tasks such as browsing, note taking, and using web based learning tools.

When purchasing a device, the Ministry of Education recommends choosing one that is:

- durable and splash resistant
- light enough to carry daily
- able to browse the internet, run basic apps, and handle schoolwork
- straightforward to repair
- compatible with school tools and platforms
- supported by an operating system that will receive updates for several years (auto-updating devices are strongly recommended)

If you would like advice on selecting a device, please contact the school and we can guide you toward the most suitable option for your child.



### Personal Device Security

Kaipara College does not accept liability for personal devices. Students bring devices to school at their own risk.

Device lockers with charging stations are available for rent at \$10 per term (or \$30 per year). Payments and keys are available at the Student Centre. Please also refer to our Device User Agreement.

To keep devices safe, we encourage:

- a protective case or carry bag
- a screen protector
- recording device details and serial numbers



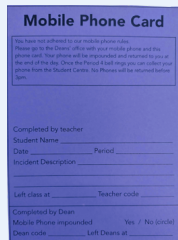
# Mobile Learning Devices



## Surrender of Personal Digital Devices

At Kaipara College we maintain a calm, respectful learning environment in line with our WAKA values. Phones are away for the day and not permitted in learning spaces unless approved by the Principal for health or learning support reasons.

Most students use devices responsibly. When concerns do arise, we follow a clear, consistent process that protects student privacy and wellbeing.



## The Purple Card Process

If a personal device disrupts learning, breaches the phone ban, or raises a safety concern, the teacher issues a Purple Card. The student takes the card and their device to the Kaitiaki or Dean.

At that point:

- the device may be held securely until the end of the day (collected by the student or whānau)
- the Kaitiaki/Dean will speak with the student to understand what has happened

next steps are determined using our behaviour and digital safety guidelines



## When harmful digital content is involved

If any digital content is found to have the potential to cause harm or indicates serious behaviour concerns, the school may:

- speak with the student
- contact parents or caregivers
- seek guidance from Netsafe

Only the police have the authority to search a device without whānau involvement.



## Our shared approach

We want all students to use digital technology confidently, responsibly, and safely. With clear expectations, our Purple Card system, and strong partnerships with whānau, we maintain a positive learning environment where young people can thrive.

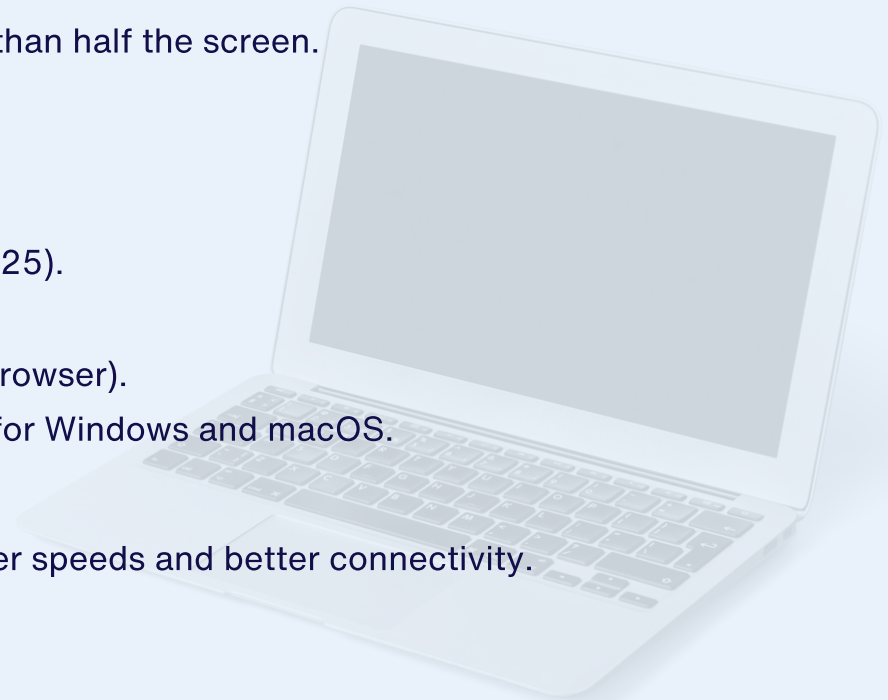




# Device Requirements for Juniors

## (Year 9 - 10: Basic Device Needs)

- **Device Type:**
  - A laptop is the most versatile option for secondary school study, especially for subjects that use specialist software (for example Digital Technology, the Arts, Media Studies, Technology, and Design and Visual Communication). A Chromebook is also suitable for many students and works well for everyday learning tasks such as browsing, note taking, and using web based learning tools.'
- **Screen Size:** At least 25 cm / 9.5 inches.
- **Keyboard:**
  - Onscreen keyboard acceptable but should not occupy more than half the screen.
  - Physical keyboard preferred for ease of typing.
- **Ports:** At least one USB or USB-C port.
- **Operating System:**
  - Chromebook with ChromeOS.
  - Windows 11 recommended (Windows 10 support ends Oct 2025).
  - Apple macOS 13.6 or newer.
  - Android 11 or newer.
  - Avoid Windows 10S & 11S (they do not support the Chrome browser).
- **Anti-Virus Software:** Not required for ChromeOS but mandatory for Windows and macOS.
- **WiFi:**
  - 802.11ac (WiFi 5) or 802.11ax (WiFi 6) preferred.
  - School supports older WiFi, but newer standards ensure faster speeds and better connectivity.
- **Battery Life:** Minimum 6 hours to last a school day.
- **Browser:** Must support the latest version of Chrome.
- **Protection:** Protective case or cover is mandatory.
- **Charging:** USB-C charging is recommended for universal compatibility.



# Device Requirements for Seniors

## Year 11 - 13:

### Advanced Features as Subjects Progress

- **Screen Size:**  
At least 30 cm / 12 inches for multitasking and subject-specific applications.
- **Keyboard:**  
Physical keyboard strongly recommended for writing essays and reports.
- **Ports:**
  - At least two USB or USB-C ports for peripherals
  - HDMI or adapter for presentations may be helpful.
- **Operating System:**  
Windows 11 or macOS 13.6 or newer  
Avoid Windows 10S & 11S versions
- **Anti-Virus Software:** Required.
- **WiFi:**  
802.11ac (WiFi 5) or 802.11ax (WiFi 6).
- **Battery Life:**  
Minimum 8 hours for full-day use with extended periods of note-taking or research.
- **Browser:**  
Latest Chrome version support required.
- **Storage:**  
Minimum 128GB for general use; 256GB+ preferred for students managing multimedia files.

## Year 11 - 13:

### Recommendations for students taking courses involving digital creation

- **Screen Size:**  
Recommended 35 cm / 14 inches (good for design and editing)
- **Keyboard & Input Devices:**
  - Physical keyboard.
  - Touchscreen/Stylus support for creative subjects (optional but beneficial).
- **Ports:**
  - Multiple USB/USB-C ports.
  - HDMI or display adapter for external monitors.
- **Operating System:**
  - Windows 11 or macOS 13.6 recommended for compatibility with professional software.
- **Performance:**
  - Processor: i5 or equivalent (minimum). i7 or equivalent recommended.
  - RAM: 16GB minimum, more recommended
  - Storage: Minimum 512GB SSD for project files and media storage.
  - Graphics: Dedicated graphics card or high-performance integrated graphics for editing/rendering (e.g., Adobe Creative Cloud, CAD).
- **WiFi:** 802.11ac or 802.11ax for high-speed uploads/downloads.
- **Charging:** consider purchasing a spare charger so there can be one at home setup for overnight charging and this is not left behind on a high use day as there is a charger permanently in the student's bag to top up the charge.
- **Software:** latest version of the chrome browser is required at school.

This might apply for courses such as DVC, Design, Photography, Digital Technology, and Media Studies. Please confirm with your subject teacher.





# Student Mobile Phones - Away for the Day

As per legislation introduced in 2024, students may bring mobile phones to school but they must be off and in the student's bag throughout the day, unless the teacher requires students to use phones for a specific educational purpose. This rule applies at interval and lunchtime too.

## What happens if students are caught using their phone?

If a student is caught using their phone they are sent to the Kaitiaki/Dean who impounds the phone.

**1st incident per term:** the phone is impounded and the student collects it after 3pm from the Student Centre Office.

**2nd & 3rd incidents onward:** caregivers/emergency contacts must pick up the phone from the Front Office. A whānau meeting may be requested.

## To ensure the phone goes to the correct individual the following process will be followed:

- **IMPORTANT:** Only caregivers/emergency contacts registered with the school will be able to pick up the impounded phone.
- Persons collecting the phone must show ID
- Caregivers/emergency contacts collecting phones will be asked to sign to confirm collection on the phone impound ticket.

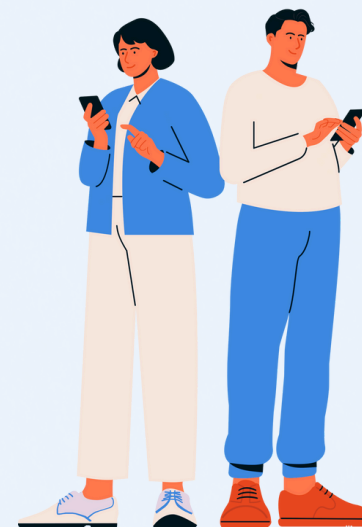
**Timing for Collecting Phones:** 8am - 3:30pm on weekdays.  
Collection is not possible on weekends.

## Can I get an exemption for my student?

There are certain exemptions available on the grounds of health or learning support needs; however applicants must meet very strict criteria and provide robust proof of requirement. To request an exemption, please contact [principal@kaipara.school.nz](mailto:principal@kaipara.school.nz)

## How can I get in touch with my student in an emergency?

Parents and whānau can support the school by not calling or messaging the students during the school day. If you need an URGENT message given to a student, you can contact the school Student Centre on 09 420 8640 ext 810.



**Please note:** students are not permitted to wear earbuds or headphones unless given permission by a staff member.



# Extra-Curricular Activities

There are many opportunities to be involved in our school & our wider community through extra curricular activities. Students will learn more about these as the year begins. The key place to watch for information about what your student can be part of is in the Student Notices. It's here as well as in whānau class and subject classes that options to join trips, teams, exchanges and more will be shared. Listed below is a taster of what may be on offer. We also encourage students/whānau to champion new opportunities and activities that they wish to be involved in. Bring these ideas to whānau teachers, related subject teachers or our sports coordinator team. **The list evolves annually so plenty of options for all!**

- PSSP
  - Writers Club
  - Choir
  - Band Factory
  - School Drama Production
  - Kapa Haka
  - Pink Shirt Day
  - PRIDE Week
  - Māori Language Week
  - Market Day
  - Australian Maths Competition
  - Science Mentoring
  - Maths Mentoring
  - Rugby Academy
  - Touch Academy
  - Gateway Program
  - Career Expos
  - Sports Exchanges
  - Librarians
  - International Students
  - Poutama Reo
  - Young Queens
  - Journey
  - Sports International Tours
  - Smokefree Rockquest
  - Itinerant Music Lessons
  - Year 12 & 13 School Ball
  - Student Leadership
  - Duke of Edinburgh
  - Table Top Club
  - Athletics
  - Badminton
  - Basketball (+ 3x3)
  - Equestrian
  - Trail Running
  - Cross Country
  - Football
  - Hockey
  - Motocross
  - Mountain Biking
  - Netball
  - Device Free Fridays
  - Rock Climbing
  - Rugby (15s, 7s & Rip)
  - Skiing & Snowboarding
  - Triathlon
  - Special Olympics
  - Surfing
  - Tag & Touch
  - Whisper Wednesdays
  - Scholarship Programs
  - Golf
  - Turbo Touch
  - Volleyball
  - Waka Ama
  - RYDA Program
  - Drivers Education
  - CAP Days in community
  - Art Exhibitions
  - Assemblies
  - Field Trips
  - Trees For Survival
  - Volunteering opportunities
  - Mathex
  - Science Fair
  - Polyfest
  - Year 12 PE Camp
  - Open Evening Ambassadors
  - Breakfast Club
  - Showquest
  - Tetrathlon
  - E TŪ Recycling Day
  - Language Club
  - Play It Strange
  - Fundraising Projects
  - Year 9 Camp
  - Barista Training

For sports teams, events and activities to happen we often need the support of whānau and our community for coaches, managers and other support people who can work alongside our school staff. If you'd like to be involved in some way please reach out to [info@kaipara.school.nz](mailto:info@kaipara.school.nz) or [sports@kaipara.school.nz](mailto:sports@kaipara.school.nz)






# Our Tuck Shop (Run by Brooke & Jenny's Snack Shack)


Kaipara College

## SNACK SHACK

### MENU







**CASH, PAYWAVE,  
BANK TRANSFER**

Kiwibank  
Brooke and Jennys  
Snack Shack  
38-9026-0702415-00



**LUNCH ORDERS**  
**WELCOME**

Email order to  
[brookeandjennyssnackshack@gmail.com](mailto:brookeandjennyssnackshack@gmail.com)  
along with proof of payment by 8:30am

**Drinks**

Calciyum (banana, choc, strawberry)	\$3
Fuze Iced Tea (peach, lemon)	\$4.50
Water	\$2
Flavoured water	\$4.5
Lipton Iced Tea Can	\$3
Powerade Zero	\$5

**Snacks**

Wedges	\$3.5
Steamed BBQ pork bun	\$5
Hash brown bites bag	\$2.5
Garlic Bread	\$2
Cheesey Garlic Bread	\$2.5
Cake/Slice/Sweets	\$3
Cookie	\$2
Moosies/Juicies	\$2.5
Ice Blocks	\$3.5
Cheese and Bacon Scone	\$4

**DAILY SPECIALS**

Keep up with specials and offers on our Facebook and Instagram

**Rolls, Burgers, Meals**

Crispy Chicken Roll	\$5
Chicken Burger	\$7
Cheese Burger	\$5.5
Butter Chicken Wrap	\$7
Butter Chicken on rice	\$7
Teriyaki on rice (warm)	\$7
American Hotdog	\$4.5
Chicken Dog	\$4.5
Riblet Roll	\$4.5
Meatball Sub	\$5
Mac N Cheese with Bacon	\$7
Katsu Rice Meal	\$7
Fresh Turkish Sandwich	\$5

### IMPORTANT!

No external takeaway food deliveries are allowed at school.  
Students must use the Tuck Shop or bring their own food.

The Tuck Shop is open during morning tea and lunch time up until the 1st bell.

The Tuck Shop has an allergens list at their shop - students are welcome to check any items.  
The Tuck Shop will be operating on both Year 9 orientation days however the menu will be limited.  
The full Tuck Shop menu will be available from Monday 3 February.





# Staying In Touch

Keeping parents, caregivers and our wider school community up to date is extremely important to us and there are a number of ways we do that, in addition to direct contact via email and phone.

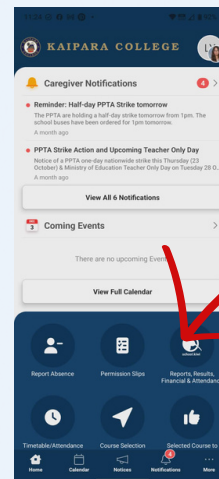
Our website is our key hub for all updates and communications. Review our News & Events Page and explore the various detailed sections to learn more about a specific information area.

We highly recommend you become familiar with the Caregiver Portal which is a critical tool for you to use to stay across information about your student/s at Kaipara College. As part of the enrolment process you will have been sent a user name and password to access the portal.

Access or launch the portal either via the website as shown below or via Schoolbridge NZ which we detail on the following page.

## Caregiver Portal

Real time information about the college, your child's progress and the school's daily notices as well as electronic permission slips can all be located through the parent portal, accessed via the school website. It is our way to communicate immediate and accurate information home. Every family will have been issued with a parent portal login for each child on enrolment. If you have misplaced your login please email [info@kaipara.school.nz](mailto:info@kaipara.school.nz) or phone the school office.



**[www.kaipara.school.nz](http://www.kaipara.school.nz)**

The website is home to all our key school information. We update this throughout the year. All Facebook & Instagram posts are also loaded to the news & events page of our website to ensure those not engaged in social media do not miss out on these mini updates.

**<https://www.kaipara.school.nz/news/news-events>**

http://



**Portal  
Access**

SchoolBridge App &  
Website

Note: The  
Caregiver  
Portal access is  
different to a  
Student's.





# Staying In Touch Continued

Below is additional information on the communication channels we use to stay in touch with you. Make sure you are familiar with these. We highly recommend you stay engaged via email, School Apps and our website. Our social media supports these but is not critical for communications.

We also send out regularly our Community News “Newsletter” to students & whānau via email in PDF format. This newsletter aims to celebrate recent highlights and inform about key information for whānau & students to be aware of. We hope you enjoy these regular updates from us.



## Email

Important information is always sent via email! We recommend you always review our school emails to stay up to date on the latest school news and information specific to your student/s.

Email is our key communication channel for direct communications regarding school activity and your student.

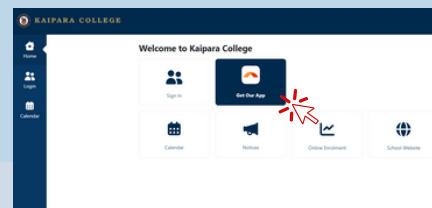
Please ensure we always have your current email address linked to your student/s contact records so you do not miss out on important information.



## SchoolBridge

On SchoolBridge you can receive notifications directly to your phone, let us know if your child is going to be absent, access the parent portal, fill out permission slips, read the daily notices and the school calendar, check attendance and results, and sign up for IEM meetings. We also use the SchoolBridge app for instant and emergency messages to the whole school community when needed.

[Click here to download the SchoolBridge App.](#)  
The link will take you to the screen shown below.



## Social Media

We utilise Facebook extensively as well as Instagram to communicate with our school community about events, successes and important details about day-to-day school life. There are a number of Kaipara College sports, cultural and other extra-curricular activities that communicate through social media and have specific social media pages. Here are the links to our primary pages: the [Kaipara College Helensville Facebook](#) page and [Kaipara College Instagram](#) page.



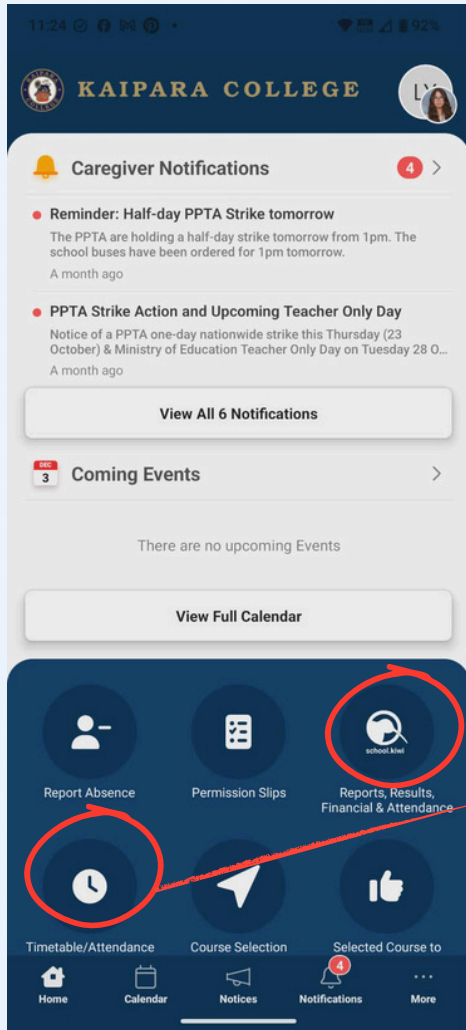
**FOLLOW US**



# Using the SchoolBridge App



## HOME SCREEN

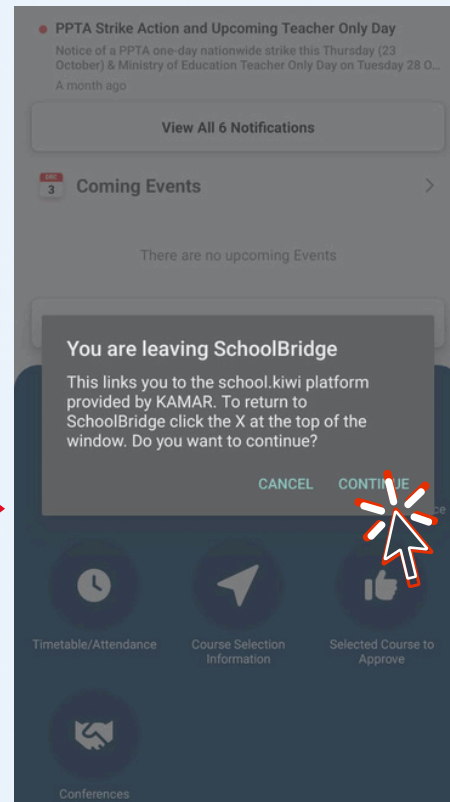


Report absences, fill permission slips, read notices and check the school calendar

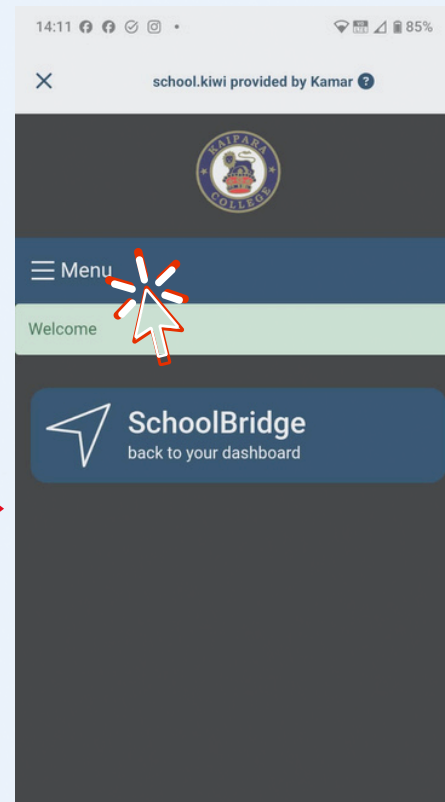
## Accessing Information About Your Student

Information about your student is held in our student management system (KAMAR). If you select either of the two buttons circled on the home screen a pop up will appear asking if you want to continue to KAMAR. To access your student's information follow the steps below.

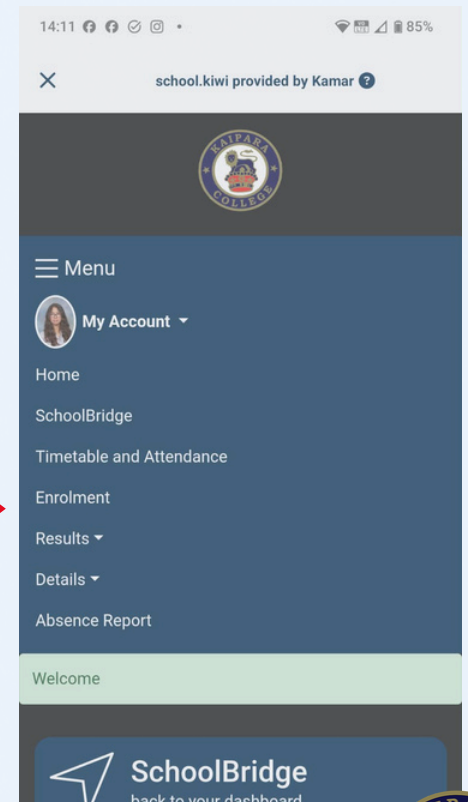
### Click "Continue"



### Tap "Menu"



### Make a selection





# Year 9 Camp, November 2026

Kaipara College will be running a Year 9 camp in week 6 of Term 4 2026.

The camp is situated in Mangawhai at Moirs Point. [moirspointmangawhai.co.nz](http://moirspointmangawhai.co.nz)  
The camp not only provides the usual benefits of an EOTC (Education Outside the Classroom) experience such as developing self-awareness and confidence, increasing personal fitness levels and developing and practising a diverse range of skills, it is located in an environment that provides motivating and enriching experiences for students including water based activities, science studies and unique local geology. This camp provides an opportunity for students to establish and strengthen healthy relationships with each other, learn valuable social skills and develop a greater sense of belonging.

This year there will be **ONE** camp only, with the first 84 students who pay their deposit of **\$150.00 (final date for payment FRIDAY 3rd July)** confirmed to attend.

**The camp is 2 nights (3 days).**

**The cost is \$370 per student.**

This covers accommodation, access to all the camp resources and activities, meals and transport (bus).

**This needs to be paid to the school in full by Friday, 9 October 2026.**

Please pay online directly into the school bank account:

**Kaipara College Board 12 – 3139 – 0002717 – 00**

Banking details: Particulars - **CAMP2026**, Code - Yr 9, Reference - Student Name.

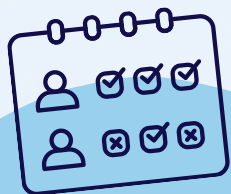
Payments can be made by EFTPOS at the Student Centre during school hours.

**We will share more information and reminders as we get closer to this activity.**





# Frequently Asked Questions & Things To Know



## How do I report a student absence?

**Phone** +64 9 420 8640 ext 810

**Phone** or text +64 27 420 8642

**Email** [attendance@kaipara.school.nz](mailto:attendance@kaipara.school.nz)

or use the absentee function on the **Schoolbridge** app.

Be sure to include a detailed explanation for the absence

## Can We Get a Bus Pass?

I need my student to catch a bus home that they do not normally ride, so they can:  
eg: go to a friends house or to meet me at my work etc. It is not possible to get a one-off bus pass or an exception bus pass at any stage sorry. Please arrange your own transport in these scenarios.

### Can I pay for my student to ride the school bus if we are not eligible at our address?

No - unfortunately it is not an option to do user pays on our school buses.



## Caregiver Portal: What do I do if I can not access the Portal?

If you can't log in to the Portal OR have forgotten your Portal Username &/or Password either call 09 420 8640 (ext 800) or email [info@kaipara.school.nz](mailto:info@kaipara.school.nz)



Login

## Prohibited Items:

The following prohibited items **must not** be brought to school:

- Knives, other weapons, and weapon parts (including replica firearms)
- Alcohol, drugs, and other substances
- Cigarettes, cigarette lighters, and matches
- Vaporisers (vapes) and vaping products
- Pornographic or offensive material.
- Aerosols (deodorants)

Additional items may also be prohibited if the school has reasonable grounds to believe:

- they will endanger safety
- detrimentally affect the learning environment
- or be harmful.

Please ensure you and your students are fully aware of all prohibited items.



## We've Moved!

Remember to update us when you have a change of address. Email us to confirm a new or change to residence or to add an additional residence for you and your student.

**info@kaipara.school.nz**

Please include your proof of new address.





# Support for families over the break

*As the school is not open over the holidays, our Hauora Hub (student support) team have put together the following list of services offering resources and support for parents & caregivers.*



## **Man Alive**

Offers counselling for young males and men and counselling support for parents and caregivers

**Ph:** 09 8350509 **Email:** [info@manalive.org.nz](mailto:info@manalive.org.nz)



## **Te Ha Oranga - Helensville**

A Ngāti Whātua organisation that provides health and wellbeing services to anyone within the Ngāti Whātua rohe.

**Ph:** 09420 8523



## **Nathan Wallis from Brainy Parenting**

NZ world-renowned Neuroscience Educator for Parents, offering science-backed tools to raise resilient, emotionally intelligent kids. Nathan offers on-demand parenting webinars, workshops & resources [www.nathanwallis.com](http://www.nathanwallis.com)



## **Kindred Family Services - Helensville**

- Counselling services for children and families affected by family harm and violence
- Counselling for Couples
- Programmes for tamariki and rangatahi witnessing family violence

**Ph:** 09420 7992



## **Ease Up**

Provides support services for young people experiencing challenges with mental wellbeing, alcohol or drug use and addictions. They will meet with the young person at school, or home or a place of your choice

**Freephone:** 0800432738



## **CAB - Helensville**

Provides free information and advice on parenting, relationships, employment, budgeting, money issues, housing, renting. They also have access to a JP and Legal Advice

**Ph:** 09 420 7162



## **The Light Project**

They provide the latest information, tools and support for young people, and their whānau regarding the digital sexual landscape [www.lightproject.co.nz](http://www.lightproject.co.nz)



## **South Kaipara Good Food**

Assist with Kai packs as well as supporting families to start up their own vege garden  
82 Mill Road, Helensville



## **Oranga Tamariki**

If you have concerns about the safety of your child or are struggling to manage their behaviour, OT can provide advice and support.

**Freephone:** 0508FAMILY

**Kai Packs** - Laikynn 021 0915 7944

**Email:** [referrals@skgf.org.nz](mailto:referrals@skgf.org.nz)

**Kai Grow** - Jo 021 071 0246

**Email:** [kaigrow@skgf.org.nz](mailto:kaigrow@skgf.org.nz)



## **Marinoto Child and Youth Mental Health Services**

Provides Mental Health assessment and treatment for children and young people 4-18 years. Referrals are made through your GP, school or another health professional.

**Ph:** 09 822 8666



## **Helensville Police**

Lou Unkoich - Youth Aid  
8 Rimu Street, Helensville  
**Ph:** 105

