



KAIPARA COLLEGE Community News

June '26



Principal's Kōrero

Kia ora koutou

As we approach the shortest day of the year, the cold and dark mornings make it harder for our young people to get up and get going. This is understandable, but it is also exactly the time when resilience matters most.

We ask our students to draw on the values that define Kaipara College, not just when it is easy, but when it is not. Showing up, staying committed, and maintaining high standards through the middle of winter is what gives students the foundation they need to succeed when it counts.

It is worth remembering that the shortest day is also a turning point. From here, the days grow longer and the end of the year comes into view. Students who have kept their standards high through the

winter months are the ones best placed to make the most of the opportunities ahead, whether that is in examinations, sport, the arts, or any other area of school life.

We appreciate your support in encouraging your son or daughter to keep their paddle in the water. A waka does not reach its destination

when only some of the crew are pulling. Every stroke counts, and every student matters. With your support at home and ours at school, we can bring everyone safely to shore.

Ngā mihi nui

Jane Coup

Meet the Principal Evening for Parents of Y7&8 Students

Thank you to the hospitality team & our senior hospitality students for the beautifully presented and appetising catering,
And to the Arts Teaching Team & Y10 Music students Sage & Lulu for the fabulous live music and art displays.



WAKA VALUES
TE WAKA O KAIPARA





KAIPARA COLLEGE Community News

ATTENDANCE & LEARNING TIME

Secondary school is a critical time for both academic milestone growth and social-emotional wellbeing, and consistent attendance is the backbone of that development.

Currently, only around half of our student body is reaching the target of 90% attendance. The graphic above highlights how quickly casual absences can snowball into significant blocks of missed learning time. Students hovering around a 70%-80% attendance rate end up missing 3-8 weeks of class a year, which can result in "catch-up stress" and anxiety as they try to find their feet in cumulative subjects like Mathematics. We understand that teenage routines can be challenging, and

%	Per 2 weeks	Per Term	Year	Total lessons missed (hours)	Total lessons missed (per subject)
100%	★	★	★	★	★
95%	½ day 😊	2½ days 😊	2 weeks 😊	50 hours 😊	10 hours (2 days) 😊
90%	1 day 😐	1 week 😐	1 month 😐	100 hours 😐	20 hours (4 days) 😐
80%	2 days 😞	2 weeks 😞	2 months 😞	200 hours 😞	40 hours (almost 2 weeks) 😞
70%	3 days 😞	3 weeks 😞	3 months 😞	300 hours 😞	60 hours 😞
50%	5 days 😞	5 weeks 😞	5 months 😞	500 hours 😞	100 hours (3½ weeks) 😞

genuine illnesses happen. However, moving a student from 70% or 80% closer to the target makes a massive difference in their academic confidence and sense of belonging. We want to partner with you to turn those numbers around. If your child is struggling with school anxiety or finding it hard to get out the door in the mornings, please reach out to their whānau teacher so we can support them.

REQUESTS FROM OUR TEAM

- ✓ Please pre-arrange with Attendance any appointments or pick ups during school hours.
- ✓ We cannot release students until we have permission from registered caregivers.
- ✓ Please report all absences with a brief reason, e.g.: unwell/appointment
- ✓ We would appreciate it if you can provide a medical certificate for illnesses 3 days plus

HOW TO CHECK YOUR STUDENT'S ATTENDANCE

DAILY - Schoolbridge App

Please click on this link for instructions on how to access the timetable & attendance screen in the schoolbridge app.

Overall attendance percentage

Fortnightly Report
Period Ending: 20/03/2026

Overall Attendance Percentage: 92%

Name	Teacher	Yr
All Subjects		
School Values	3.6	3.6
Arachnoid Program	3.4	3.4
1 English		
Achievement Standards	3.5	3.5
Teacher name	4	4
Mathematics		
Achievement Standards	4	4
Teacher name	4	4
Physical Education		
Achievement Standards	4	4
Teacher name	4	4

FORTNIGHTLY - fortnightly reports

2026 Attendance Summary

Year 10

At our school, we have an Attendance Management Plan which includes the Stepped Attendance Response (STAR) framework led out by the Ministry of Education. The STAR framework is as follows:

- Green - Good. Absent from school for less than 4.5 days in a term.
- Yellow - Worrying. Absent from school for 5 - 9.5 days in a term.
- Orange - Concerning. Absent from school for 10 - 14.5 days in a term.
- Red - Serious Concern. Absent from school for 15 or more days in a term.

This page summarises score attendance for each term this year.

Attendance This Year	Term 1	Term 2	Term 3	Term 4	Total
Half Days Open	54	0	0	0	54
Present	77 half days	0 half days	0 half days	0 half days	77 half days
Late Occurrences	4 times	0 times	0 times	0 times	4 times
Attendance Rate	92%	100%	100%	100%	92%

Attendance This Year

Attendance This Year	Term 1	Term 2	Term 3	Term 4	Total
Half Days Open	0	0	0	0	0
Present	0	0	0	0	0
Late Occurrences	0	0	0	0	0
Attendance Rate	Green	Green	Green	Green	Green

See p2 of T1 report sent 2 April



KAIPARA COLLEGE Community News

Become a Homestay Family!



Kaipara College International
Students Department
is looking for new Homestay families
for **Term Three!**

6 week or
10 week placements
in Term Three

Hosting 1 or 2
Students

Be part of their
New Zealand
experience

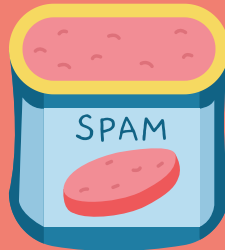


*A short-term opportunity
with a lasting impact*

For more information email
international@kaipara.school.nz

Are you a Gmail user?

CHECK YOUR SPAM FOLDER!!



It has come to our attention that
many important emails are being
delivered to SPAM folders.

Please report our emails as not spam!

FREE EVENT
For all ages & abilities!



RODNEY'S
COMMUNITY

PARKOUR Give-it-a-go!

Making movement accessible & fun!

Saturday
2pm - 4pm
18 JULY 2026

**Kaukapakapa
Hall**

Explore jumping, balancing, rolling,
climbing & creative movement using
portable obstacles & parkour-based
activities – perfect for first-timers &
confident movers alike.

Build confidence, coordination, &
strength in a fun, supportive environment.
Experienced flow coaches will guide
participants throughout the session.

SESSION RUN BY
FLOW ACADEMY
OF MOTION

PROUDLY SUPPORTED BY:
 Rodney
Local Board

Parents and caregivers of younger
children are encouraged to assist their
child as they move through the activities,
while older children are welcome to
explore independently at their
own pace.



www.rodneycommunity.org.nz

FREE MORNING TEA



RODNEY'S
COMMUNITY

School Uniforms Connection & Cake!

Thursday
10.30am - 12.00pm
16 JULY 2026

**St Matthews
Church Lounge**

60 Garfield Rd, Helensville
(Parking to the side &
behind the church)

Come & enjoy kai & a hot drink,
donate your unwanted school
uniform items or pick-up
pre-loved essentials for the
next school term.

- Local school uniforms available for a koha or free to those in need
- Activities for kids while you browse
- Meet other locals, & the faces behind the racks of 'Our Village'
- Share on the 'Community Wall'

PROUDLY SUPPORTED BY:
 Rodney
Local Board

L2C
Helping local whānau
one school uniform at a time



www.rodneycommunity.org.nz



OPEN EVENING

Join us **Tuesday 23 June 2026, 6pm**

Take a guided tour with our student experts and explore our facilities, where the classrooms are open with interactive activities. Chat to our wonderful staff and students and find out first hand what makes us unique.



Enrolments are open; enrol online.
kaipara.school.nz

HEEADSSS Assessments

Free, and confidential health services funded by Te Whatu Ora's (Health NZ) School Based Health Services (SBHS) program are available onsite at Kaipara College.

As part of this program, all new students (including all Year 9s) receive a HEEADSSS assessment. This is a confidential discussion covering various areas of student health to identify their strengths and see where extra support might be helpful.

If you have any questions or wish to exclude your student from this assessment, please contact us at 09 420 8640 or email nurse@kaipara.school.nz.

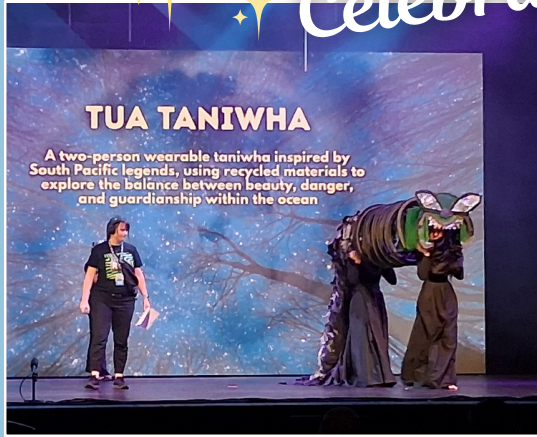


Click [here](#) for more info about
the HEEADSSS assessment



KAIPARA COLLEGE Community News

Celebrating!



A huge thank you to Sara Dean for her unwavering support of both our performing and wearable arts students. Your gift of time and your dedication is what makes these incredible student opportunities possible!

Huge congratulations to our three Kaipara College teams who participated in the Toi Wearable Arts 2026! The creativity and hours of hard work behind each costume are absolutely incredible.

A massive shoutout to Tineka Jones and Macey Clerke, whose stunning creation, *Tua Taniwha*, won the Creative Concept award! Fantastic effort everyone!

ANGITUTANGA - OUR SUCCESS



*Eke panuku, eke Tangaroa,
Whakaeke atu rā ki te atamira
o Tānerore, o Hinerēhia.*

KAIPARA FESTIVAL 2026

Hosted by Kaipara College

- Saturday 19th of September
- Kapa Haka Performances
- Food stalls

To register your kapa / kura to perform at this year's festival, please email btppaa@kaipara.school.nz



Eke panuku, eke Tangaroa! Kaipara College is thrilled to be hosting the upcoming Kaipara Festival 2026 on Saturday, 19th of September.

Get ready for an incredible day celebrating culture, unity, and the immense talent of local rangatahi from throughout the region. The stage will come alive with powerful kapa haka performances.

Mark your calendars for September 19th—we can't wait to host this spectacular celebration!



Kaipara College

Congratulations!



Tua Taniwha
Tineka Jones & Macey Clerke

Winners!
Creative Concept
Toi Wearable Arts 2026

Upcoming Events

Baskerville (School Play)
Wed 17 - Sat 20 June

Business Studies Market Day
Tue 23 June

Open Evening (for 2027 enrolments)
Tue 23 June

Team/Group Photos
Thu 25 June

Kapa Haka Nationals
Mon 29 June- Fri 3 July

Tira Masterchef
Thu 2 - Fri 3 July

Last Day of Term 2
Fri 3 July

School Ball
Sat 4 July

Matariki (during School Holidays)
Fri 10 July

First Day of Term 3
Mon 20 July

Equestrian Team Bake Sale
Fri 24 July



KAIPARA COLLEGE Community News



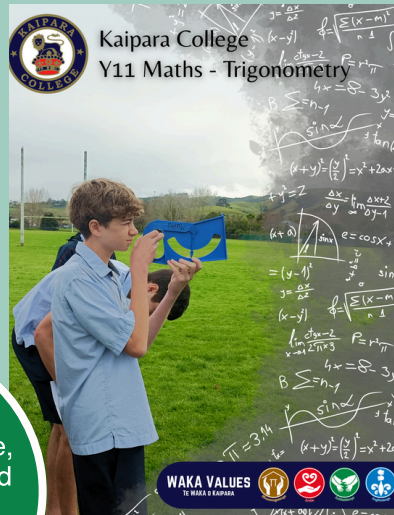
Kaitiakitanga

The students showed resilience, determination and teamwork as we navigated the steep terrain.

Year 13 Outdoor Education Cape Brett Hike!

Thank you to Mr Henley & Ms Enoka for taking the Level 3 Outdoor Education Students on the Cape Brett Hike in Oke Bay, Rawhiti!

KAITIAKITANGA - OUR PLACE



Kaipara College
Y11 Maths - Trigonometry



KAITIAKITANGA - OUR PLACE
Whakatauki: Manaaki mātauranga, manaaki taiao, manaaki tāngata -
Care for knowledge, the environment, and people.

Whakatauki: Manaaki mātauranga, manaaki taiao, manaaki tāngata -
Care for knowledge, the environment, and people.



Year 12 Stratification Field Trip!
Thank you to Ms Jochmann for taking the Level 2 Bio students on a Stratification Field Trip to Arataki Center Waitakere Ranges!

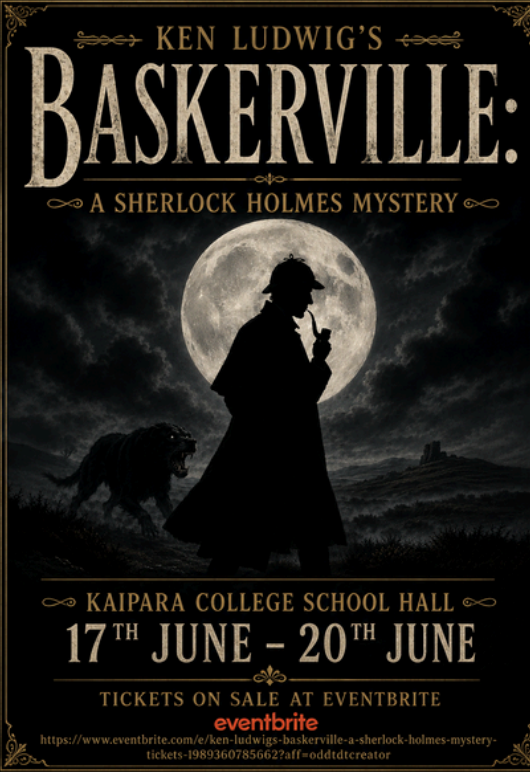




KAIPARA COLLEGE Community News

[Click here to purchase tickets](#)

Pics from Wednesday's dress rehearsal/matinee performance. Click on the link to the right to get your tickets!



Get ready for mystery, mayhem, and a mountain of laughs! The Kaipara College drama team present Baskerville, a comedic spin on the classic Sherlock Holmes tale. Full of dizzying energy and theatrical wit, this is a performance you won't want to miss. Tickets are on sale now—grab yours before they disappear!



ADVERTISE WITH US

In our newsletters and/or on our digital signage

Proceeds will go toward our staff wellbeing fund which will enable us to better celebrate and support our hard-working teachers and support staff.

If you are interested in supporting the school in this way please reach out to the principal's PA, Lara Yamamoto, on lyamamoto@kaipara.school.nz



If you have unresolved concerns and would like to be in touch with us at Kaipara College, here are the concerns and complaints [process](#) and [policy](#). If you have any queries about the complaints process, please email principal@kaipara.school.nz